

Anti-CASP2 antibody

Cat. No.	ml220075
Package	25 µl/100 µl/200 µl
Storage	-20°C, pH7.4 PBS, 0.05% NaN ₃ , 40% Glycerol

Product overview

Description	Anti-CASP2 rabbit polyclonal antibody
Applications	ELISA, WB, IHC
Immunogen	Fusion protein of human CASP2
Reactivity	Human, Mouse, Rat
Content	0.6 mg/ml
Host species	Rabbit
Ig class	Immunogen-specific rabbit IgG
Purification	Antigen affinity purification

Target information

Symbol	CASP2
Full name	Caspase-2

Synonyms ICH1, NEDD2, CASP-2, NEDD-2

Swissprot P42575

Target Background

This gene encodes a member of the cysteine-aspartic acid protease (caspase) family. Caspases mediate cellular apoptosis through the proteolytic cleavage of specific protein substrates. The encoded protein may function in stress-induced cell death pathways, cell cycle maintenance, and the suppression of tumorigenesis. Increased expression of this gene may play a role in neurodegenerative disorders including Alzheimer's disease, Huntington's disease and temporal lobe epilepsy. Alternatively spliced transcript variants encoding multiple isoforms have been observed for this gene.

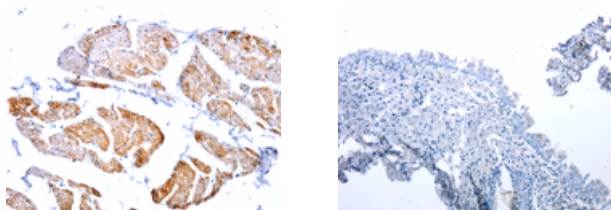
Applications

Immunohistochemistry

Predicted cell location: Cytoplasm

Positive control: Human urinary bladder

Recommended dilution: 100-300



The image on the left is immunohistochemistry of paraffin-embedded Human urinary bladder tissue using ml220075(CASP2 Antibody) at dilution 1/100, on the right is treated with fusion protein. (Original magnification: $\times 200$)

Western blotting

Predicted band size: 51 kDa

Positive control: Human fetal kidney and lung tissue

Recommended dilution: 1000-2000

Gel: 10%SDS-PAGE

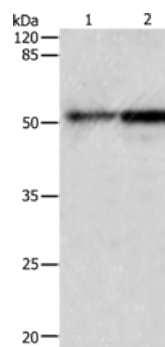
Lysate: 30 µg

Lane 1-2: Human fetal kidney tissue, Human lung tissue

Primary antibody: ml220075(CASP2 Antibody) at dilution 1/950

Secondary antibody: Goat anti rabbit IgG at 1/8000 dilution

Exposure time: 2 minutes



ELISA

Recommended dilution: 1000-10000

联系电话: 4008-898-798, 021-61725725

联系QQ: 2881505695, 2881505696

邮箱: mlbio_cn@yeah.net

网址: www.mlbio.cn