

Anti-TLR1 antibody

Cat. No.	ml220099
Package	25 µl/100 µl/200 µl
Storage	-20°C, pH7.4 PBS, 0.05% NaN ₃ , 40% Glycerol

Product overview

Description	Anti-TLR1 rabbit polyclonal antibody
Applications	ELISA, WB, IHC
Immunogen	Fusion protein of human TLR1
Reactivity	Human, Mouse
Content	0.1 mg/ml
Host species	Rabbit
Ig class	Immunogen-specific rabbit IgG
Purification	Antigen affinity purification

Target information

Symbol	TLR1
Full name	toll-like receptor 1

Synonyms TIL; CD281; rsc786; TIL. LPRS5

Swissprot Q15399

Target Background

The protein encoded by this gene is a member of the Toll-like receptor (TLR) family which plays a fundamental role in pathogen recognition and activation of innate immunity. TLRs are highly conserved from *Drosophila* to humans and share structural and functional similarities. They recognize pathogen-associated molecular patterns (PAMPs) that are expressed on infectious agents, and mediate the production of cytokines necessary for the development of effective immunity. The various TLRs exhibit different patterns of expression. This gene is ubiquitously expressed, and at higher levels than other TLR genes. Different length transcripts presumably resulting from use of alternative polyadenylation site, and/or from alternative splicing, have been noted for this gene.

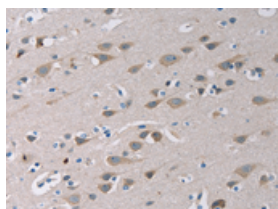
Applications

Immunohistochemistry

Predicted cell location: Cytoplasm

Positive control: Human brain

Recommended dilution: 15-50

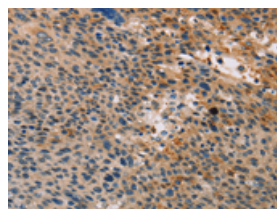


The image on the left is immunohistochemistry of paraffin-embedded Human brain tissue using ml220099(TLR1 Antibody) at dilution 1/20, on the right is treated with fusion protein. (Original magnification: ×200)

Predicted cell location: Cytoplasm

Positive control: Human liver cancer

Recommended dilution: 15-50



The image on the left is immunohistochemistry of paraffin-embedded Human liver cancer tissue using ml220099(TLR1 Antibody) at dilution 1/20, on the right is treated with fusion protein. (Original magnification: ×200)

Western blotting

Predicted band size: 90 kDa

Positive control: Mouse thymus tissue and K562 cells

Recommended dilution: 200-1000

Gel: 8%SDS-PAGE

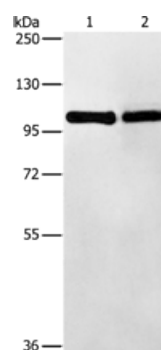
Lysate: 40 µg

Lane 1-2: Mouse thymus tissue, K562 cells

Primary antibody: ml220099(TLR1 Antibody) at dilution 1/175

Secondary antibody: Goat anti rabbit IgG at 1/8000 dilution

Exposure time: 10 seconds



ELISA

Recommended dilution: 1000-2000

联系电话: 4008-898-798, 021-61725725

联系QQ: 2881505695, 2881505696

邮箱: mlbio_cn@yeah.net

网址: www.mlbio.cn