

Anti-APBA1 antibody

Cat. No.	ml161288
Package	25 µl/100 µl/200 µl
Storage	-20°C, pH7.4 PBS, 0.05% NaN ₃ , 40% Glycerol

Product overview

Description	Anti-APBA1 rabbit polyclonal antibody
Applications	ELISA, WB
Immunogen	Synthetic peptide of human APBA1
Reactivity	Human, Mouse, Rat
Content	0.1 mg/ml
Host species	Rabbit
Ig class	Immunogen-specific rabbit IgG
Purification	Antigen affinity purification

Target information

Symbol	APBA1
Full name	amyloid beta (A4) precursor protein-binding, family A, member 1
Synonyms	X11; X11A; LIN10; MINT1; D9S411E; X11ALPHA
Swissprot	Q02410

Target Background

The protein encoded by this gene is a member of the X11 protein family. It is a neuronal adapter protein that interacts with the Alzheimer's disease amyloid precursor protein (APP). It stabilizes APP and inhibits production of proteolytic APP fragments including the A beta peptide that is deposited in the brains of Alzheimer's disease patients. This gene product is believed to be involved in signal transduction processes. It is also regarded as a putative vesicular trafficking protein in the brain that can form a complex with the potential to couple synaptic vesicle exocytosis to neuronal cell adhesion.

订购热线: 4008-898-798

Applications

Western blotting

Predicted band size: 93 kDa

Positive control: Human fetal brain and mouse brain tissue

Recommended dilution: 500-2000

Gel: 8%SDS-PAGE

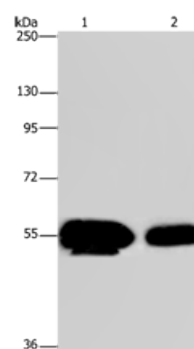
Lysate: 50 µg

Lane 1-2: Human fetal brain tissue, mouse brain tissue

Primary antibody: ml161288(APBA1 Antibody) at dilution 1/200

Secondary antibody: Goat anti rabbit IgG at 1/8000 dilution

Exposure time: 10 seconds



ELISA

Recommended dilution: 2000-5000

联系电话: 4008-898-798, 021-61725725

联系QQ: 2881505695, 2881505696

邮箱: mlbio_cn@yeah.net

网址: www.mlbio.cn