

## Anti-AIMP2 antibody

<b>Cat. No.</b>	ml220130
<b>Package</b>	25 µl/100 µl/200 µl
<b>Storage</b>	-20°C, pH7.4 PBS, 0.05% NaN <sub>3</sub> , 40% Glycerol

### Product overview

<b>Description</b>	Anti-AIMP2 rabbit polyclonal antibody
<b>Applications</b>	ELISA, WB, IHC
<b>Immunogen</b>	Fusion protein of human AIMP2
<b>Reactivity</b>	Human, Mouse, Rat
<b>Content</b>	0.5 mg/ml
<b>Host species</b>	Rabbit
<b>Ig class</b>	Immunogen-specific rabbit IgG
<b>Purification</b>	Antigen affinity purification

### Target information

<b>Symbol</b>	AIMP2
<b>Full name</b>	Aminoacyl tRNA synthase complex-interacting multifunctional protein 2

**Synonyms** P38, JTV1, JTV-1

**Swissprot** Q13155

#### **Target Background**

The JTV1 gene is located on chromosome 7p22 flanked by two genes, HRI and PMS2. JTV1 and HRI overlap slightly and are arranged in a tail-to-tail fashion. JTV1 and PMS2 are separated by approximately 200 base pairs and are arranged head-to-head. JTV1 is transcribed in the opposite direction compared to HRI and PMS2. The function of the JTV1 gene product is unknown.

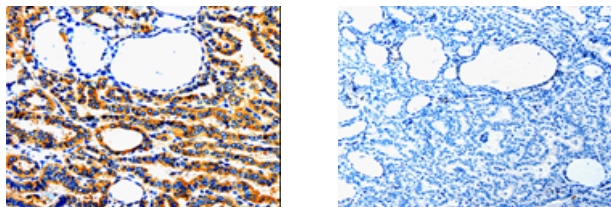
## Applications

### Immunohistochemistry

Predicted cell location: Cytoplasm

Positive control: Human thyroid cancer

Recommended dilution: 50-200



The image on the left is immunohistochemistry of paraffin-embedded Human thyroid cancer tissue using ml220130(AIMP2 Antibody) at dilution 1/50, on the right is treated with fusion protein. (Original magnification:  $\times 200$ )

### Western blotting

Predicted band size: 35 kDa

Positive control: HepG2 and A549 cells

Recommended dilution: 200-1000

Gel: 8%SDS-PAGE

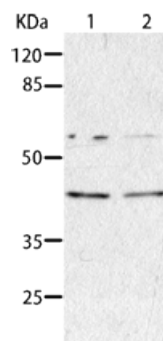
Lysate: 40 µg

Lane 1-2: HepG2 cells, A549 cells

Primary antibody: ml220130(AIMP2 Antibody) at dilution 1/350

Secondary antibody: Goat anti rabbit IgG at 1/8000 dilution

Exposure time: 1 minute



## ELISA

Recommended dilution: 500-5000

联系电话: 4008-898-798, 021-61725725

联系QQ: 2881505695, 2881505696

邮箱: [mlbio\\_cn@yeah.net](mailto:mlbio_cn@yeah.net)

网址: [www.mlbio.cn](http://www.mlbio.cn)