

Anti-UBE2J2 antibody

Cat. No.	ml223744
Package	25 µl/100 µl/200 µl
Storage	-20°C, pH7.4 PBS, 0.05% NaN ₃ , 40% Glycerol

Product overview

Description	Anti-UBE2J2 rabbit polyclonal antibody
Applications	ELISA, WB, IHC
Immunogen	Fusion protein of human UBE2J2
Reactivity	Human, Mouse
Content	0.9 mg/ml
Host species	Rabbit
Ig class	Immunogen-specific rabbit IgG
Purification	Antigen affinity purification

Target information

Symbol	UBE2J2
Full name	ubiquitin-conjugating enzyme E2, J2

Synonyms NCUBE2; NCUBE-2; PRO2121

Swissprot Q8N2K1

Target Background

The modification of proteins with ubiquitin is an important cellular mechanism for targeting abnormal or short-lived proteins for degradation. Ubiquitination involves at least three classes of enzymes: ubiquitin-activating enzymes, or E1s, ubiquitin-conjugating enzymes, or E2s, and ubiquitin-protein ligases, or E3s. This gene encodes a member of the E2 ubiquitin-conjugating enzyme family. This enzyme is located in the membrane of the endoplasmic reticulum.

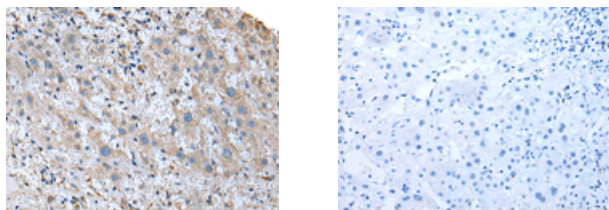
Applications

Immunohistochemistry

Predicted cell location: Cytoplasm

Positive control: Human liver cancer

Recommended dilution: 10-50



The image on the left is immunohistochemistry of paraffin-embedded Human liver cancer tissue using ml223744(UBE2J2 Antibody) at dilution 1/20, on the right is treated with fusion protein. (Original magnification: ×200)

Western blotting

Predicted band size: 29 kDa

Positive control: 293T cell, Mouse skeletal muscle tissue and HEPG2 cell

Recommended dilution: 200-1000

Gel: 12%SDS-PAGE

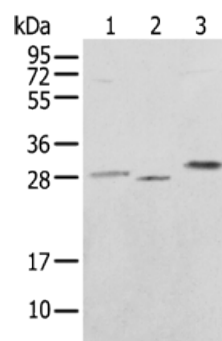
Lysate: 40 µg

Lane 1-3: 293T cell, Mouse skeletal muscle tissue and HEPG2 cell

Primary antibody: ml223744(UBE2J2 Antibody) at dilution 1/250

Secondary antibody: Goat anti rabbit IgG at 1/8000 dilution

Exposure time: 3 seconds



ELISA

Recommended dilution: 5000-10000

联系电话: 4008-898-798, 021-61725725

联系QQ: 2881505695, 2881505696

邮箱: mlbio_cn@yeah.net

网址: www.mlbio.cn