

Anti-NFKBID antibody

Cat. No.	ml220139
Package	25 µl/100 µl/200 µl
Storage	-20°C, pH7.4 PBS, 0.05% NaN ₃ , 40% Glycerol

Product overview

Description	Anti-NFKBID rabbit polyclonal antibody
Applications	ELISA, WB, IHC
Immunogen	Fusion protein of human NFKBID
Reactivity	Human, Mouse
Content	0.4 mg/ml
Host species	Rabbit
Ig class	Immunogen-specific rabbit IgG
Purification	Antigen affinity purification

Target information

Symbol	NFKBID
Full name	nuclear factor of kappa light polypeptide gene enhancer in B-cells inhibitor, delta

Synonyms TA-NFKBH, IkappaBNS

Swissprot Q8NI38

Target Background

May regulate the expression of IL-2, IL-6, and other cytokines through regulation on NF-kappa-B activity. Functions in the regulation of inflammatory responses. May also regulate TCR-induced negative selection of thymocytes. IkBNS, the nuclear IkB-like protein encoded by Nfkbid, is required for the development of marginal zone and peritoneal B-1 B cells and additionally required for extrafollicular antibody responses to T-independent and -dependent immunogens. IkBNS has been identified as a member of the IkB family of NF-κB inhibitors, which undergoes induction upon TCR signaling. IkBNS mediates both positive and negative gene regulation, depending on individual cell type and/or cytokine.

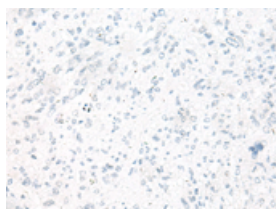
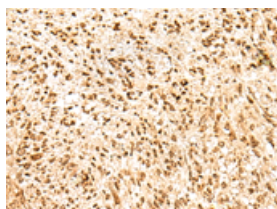
Applications

Immunohistochemistry

Predicted cell location: Cytoplasm, Nucleus

Positive control: Human colon cancer

Recommended dilution: 25-100

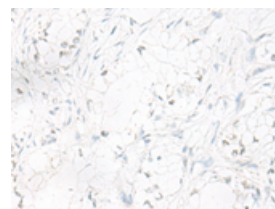
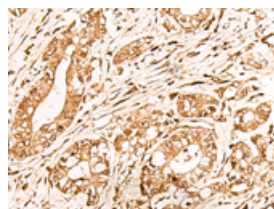


The image on the left is immunohistochemistry of paraffin-embedded Human colon cancer tissue using ml220139(NFKBID Antibody) at dilution 1/40, on the right is treated with fusion protein. (Original magnification: $\times 200$)

Predicted cell location: Cytoplasm, Nucleus

Positive control: Human thyroid cancer

Recommended dilution: 25-100



The image on the left is immunohistochemistry of paraffin-embedded Human thyroid cancer tissue using ml220139(NFKBID Antibody) at dilution 1/40, on the right is treated with fusion protein. (Original magnification: $\times 200$)

Western blotting

Predicted band size: 33 kDa

Positive control: RAW264.7 cells

Recommended dilution: 200-1000

Gel: 10+12%SDS-PAGE

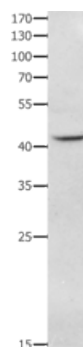
Lysate: 40 µg

Lane: RAW264.7 cells

Primary antibody: ml220139(NFKBID Antibody) at dilution 1/650

Secondary antibody: Goat anti rabbit IgG at 1/8000 dilution

Exposure time: 2 minutes



ELISA

Recommended dilution: 1000-5000

联系电话: 4008-898-798, 021-61725725

联系QQ: 2881505695, 2881505696

邮箱: mlbio_cn@yeah.net

网址: www.mlbio.cn