

## Anti-IL23R antibody

<b>Cat. No.</b>	ml220179
<b>Package</b>	25 µl/100 µl/200 µl
<b>Storage</b>	-20°C, pH7.4 PBS, 0.05% NaN <sub>3</sub> , 40% Glycerol

### Product overview

<b>Description</b>	Anti-IL23R rabbit polyclonal antibody
<b>Applications</b>	ELISA, WB, IHC
<b>Immunogen</b>	Fusion protein of human IL23R
<b>Reactivity</b>	Human
<b>Content</b>	0.2 mg/ml
<b>Host species</b>	Rabbit
<b>Ig class</b>	Immunogen-specific rabbit IgG
<b>Purification</b>	Antigen affinity purification

### Target information

<b>Symbol</b>	IL23R
<b>Full name</b>	Interleukin-23 receptor

#### Synonyms

Swissprot Q5VWK5

#### Target Background

The protein encoded by this gene is a subunit of the receptor for IL23A/IL23. This protein pairs with the receptor molecule IL12RB1/IL12Rbeta1, and both are required for IL23A signaling. This protein associates constitutively with Janus kinase 2 (JAK2), and also binds to transcription activator STAT3 in a ligand-dependent manner.

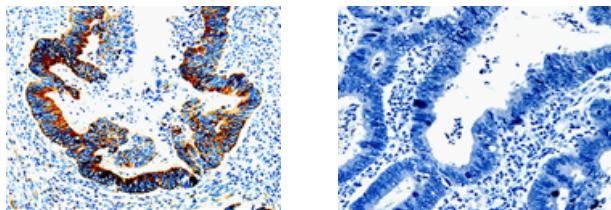
## Applications

### Immunohistochemistry

Predicted cell location: Cytoplasm

Positive control: Human rectal cancer

Recommended dilution: 5-20



The image on the left is immunohistochemistry of paraffin-embedded Human rectal cancer tissue using ml220179(IL23R Antibody) at dilution 1/10, on the right is treated with fusion protein. (Original magnification:  $\times 200$ )

### Western blotting

Predicted band size: 72 kDa

Positive control: Human sigmoid tissue

Recommended dilution: 500-2000

Gel: 8%SDS-PAGE

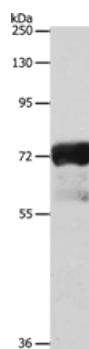
Lysate: 40  $\mu$ g

Lane: Human sigmoid tissue

Primary antibody: ml220179(IL23R Antibody) at dilution 1/300

Secondary antibody: Goat anti rabbit IgG at 1/8000 dilution

Exposure time: 30 seconds



## ELISA

Recommended dilution: 500-5000

联系电话: 4008-898-798, 021-61725725

联系QQ: 2881505695, 2881505696

邮箱: [mlbio\\_cn@yeah.net](mailto:mlbio_cn@yeah.net)

网址: [www.mlbio.cn](http://www.mlbio.cn)