

Anti-ALDOA antibody

Cat. No.	ml220203
Package	25 µl/100 µl/200 µl
Storage	-20°C, pH7.4 PBS, 0.05% NaN ₃ , 40% Glycerol

Product overview

Description	Anti-ALDOA rabbit polyclonal antibody
Applications	ELISA, WB, IHC
Immunogen	Fusion protein of human ALDOA
Reactivity	Human, Mouse, Rat
Content	0.2 mg/ml
Host species	Rabbit
Ig class	Immunogen-specific rabbit IgG
Purification	Antigen affinity purification

Target information

Symbol	ALDOA
Full name	Aldolase A, fructose-bisphosphate

Synonyms ALDA; GSD12

Swissprot P04075

Target Background

The protein encoded by this gene, Aldolase A (fructose-bisphosphate aldolase), is a glycolytic enzyme that catalyzes the reversible conversion of fructose-1,6-bisphosphate to glyceraldehyde 3-phosphate and dihydroxyacetone phosphate. Three aldolase isozymes (A, B, and C), encoded by three different genes, are differentially expressed during development. Aldolase A is found in the developing embryo and is produced in even greater amounts in adult muscle. Aldolase A expression is repressed in adult liver, kidney and intestine and similar to aldolase C levels in brain and other nervous tissue. Aldolase A deficiency has been associated with myopathy and hemolytic anemia. Alternative splicing and alternative promoter usage results in multiple transcript variants. Related pseudogenes have been identified on chromosomes 3 and 10.

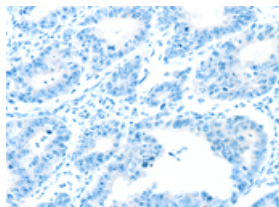
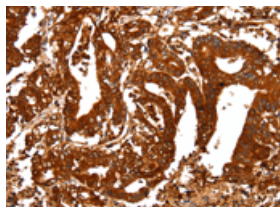
Applications

Immunohistochemistry

Predicted cell location: Cytoplasm

Positive control: Human gasrtic cancer

Recommended dilution: 50-200

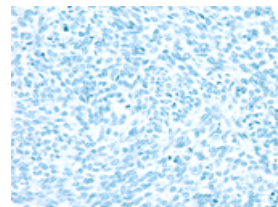
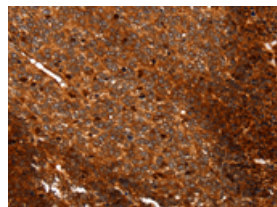


The image on the left is immunohistochemistry of paraffin-embedded Human gasrtic cancer tissue using ml220203(ALDOA Antibody) at dilution 1/25, on the right is treated with fusion protein. (Original magnification: ×200)

Predicted cell location: Cytoplasm

Positive control: Human ovarian cancer

Recommended dilution: 50-200



The image on the left is immunohistochemistry of paraffin-embedded Human ovarian cancer tissue using ml220203(ALDOA Antibody) at dilution 1/25, on the right is treated with fusion protein. (Original magnification: ×200)

Western blotting

Predicted band size:39 kDa

Positive control:A549 and hela cells

Recommended dilution: 200-1000

Gel: 10%SDS-PAGE

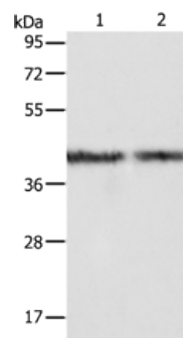
Lysate: 40 µg

Lane 1-2: A549 cells, hela cells

Primary antibody: ml220203(ALDOA Antibody) at dilution 1/350

Secondary antibody: Goat anti rabbit IgG at 1/8000 dilution

Exposure time: 3 seconds



ELISA

Recommended dilution: 1000-2000

联系电话: 4008-898-798, 021-61725725

联系QQ: 2881505695, 2881505696

邮箱: mlbio_cn@yeah.net

网址: www.mlbio.cn