

Anti-LIN28B antibody

Cat. No.	ml161340
Package	25 µl/100 µl/200 µl
Storage	-20°C, pH7.4 PBS, 0.05% NaN ₃ , 40% Glycerol

Product overview

Description	Anti-LIN28B rabbit polyclonal antibody
Applications	ELISA, WB
Immunogen	Synthetic peptide of human LIN28B
Reactivity	Human, Mouse
Content	0.3 mg/ml
Host species	Rabbit
Ig class	Immunogen-specific rabbit IgG
Purification	Antigen affinity purification

Target information

Symbol	LIN28B
Full name	lin-28 homolog B (C. elegans)
Synonyms	CSDD2
Swissprot	Q6ZN17

Target Background

The protein encoded by this gene belongs to the lin-28 family, which is characterized by the presence of a cold-shock domain and a pair of CCHC zinc finger domains. This gene is highly expressed in testis, fetal liver, placenta, and in primary human tumors and cancer cell lines. It is negatively regulated by microRNAs that target sites in the 3' UTR, and overexpression of this gene in primary tumors is linked to the repression of let-7 family of microRNAs and derepression of let-7 targets, which facilitates cellular transformation. [provided by RefSeq, Jun 2012]

订购热线: 4008-898-798

Applications

Western blotting

Predicted band size: 27 kDa

Positive control: Mouse liver tissue and k562 cells, hela and 293T cells

Recommended dilution: 500-2000

Gel: 10%SDS-PAGE

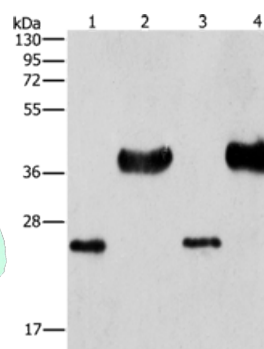
Lysate: 40 µg

Lane 1-4: Mouse liver tissue, k562 cells, hela cells, 293T cells

Primary antibody: ml161340(LIN28B Antibody) at dilution 1/550

Secondary antibody: Goat anti rabbit IgG at 1/8000 dilution

Exposure time: 1 minute



ELISA

Recommended dilution: 2000-5000

联系电话: 4008-898-798, 021-61725725

联系QQ: 2881505695, 2881505696

邮箱: mlbio_cn@yeah.net

网址: www.mlbio.cn