

Anti-ANXA8 antibody

Cat. No.	ml220222
Package	25 µl/100 µl/200 µl
Storage	-20°C, pH7.4 PBS, 0.05% NaN ₃ , 40% Glycerol

Product overview

Description	Anti-ANXA8 rabbit polyclonal antibody
Applications	ELISA, WB, IHC
Immunogen	Fusion protein of human ANXA8
Reactivity	Human, Mouse, Rat
Content	0.3 mg/ml
Host species	Rabbit
Ig class	Immunogen-specific rabbit IgG
Purification	Antigen affinity purification

Target information

Symbol	ANXA8
Full name	annexin A8

Synonyms	ANX8
Swissprot	P13928

Target Background

This gene encodes a member of the annexin family of evolutionarily conserved Ca^{2+} and phospholipid binding proteins. The encoded protein may function as an anticoagulant that indirectly inhibits the thromboplastin-specific complex. Overexpression of this gene has been associated with acute myelocytic leukemia. A highly similar duplicated copy of this gene is found in close proximity on the long arm of chromosome 10.

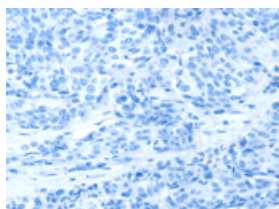
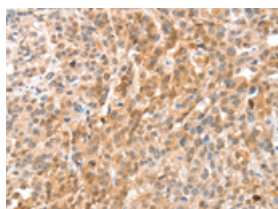
Applications

Immunohistochemistry

Predicted cell location: Cytoplasm

Positive control: Human esophagus cancer

Recommended dilution: 50-100

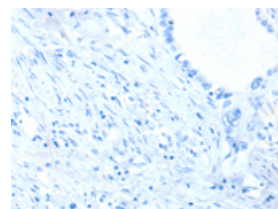
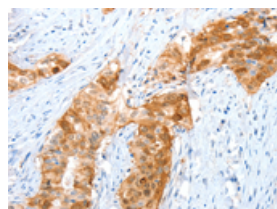


The image on the left is immunohistochemistry of paraffin-embedded Human esophagus cancer tissue using ml220222(ANXA8 Antibody) at dilution 1/35, on the right is treated with fusion protein. (Original magnification: $\times 200$)

Predicted cell location: Cytoplasm

Positive control: Human cervical cancer

Recommended dilution: 50-100



The image on the left is immunohistochemistry of paraffin-embedded Human cervical cancer tissue using ml220222(ANXA8 Antibody) at dilution 1/35, on the right is treated with fusion protein. (Original magnification: $\times 200$)

Western blotting

Predicted band size: 37 kDa

Positive control: A549 cells

Recommended dilution: 200-1000

Gel: 10%SDS-PAGE

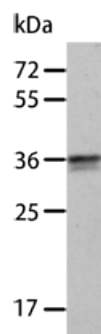
Lysate: 40 μ g

Lane: A549 cells

Primary antibody: ml220222(ANXA8 Antibody) at dilution 1/300

Secondary antibody: Goat anti rabbit IgG at 1/8000 dilution

Exposure time: 2 minutes



ELISA

Recommended dilution: 2000-5000

联系电话: 4008-898-798, 021-61725725

联系QQ: 2881505695, 2881505696

邮箱: mlbio_cn@yeah.net

网址: www.mlbio.cn