

Anti-PIP5K1C antibody

Cat. No.	ml161375
Package	25 µl/100 µl/200 µl
Storage	-20°C, pH7.4 PBS, 0.05% NaN ₃ , 40% Glycerol

Product overview

Description	Anti-PIP5K1C rabbit polyclonal antibody
Applications	ELISA, WB
Immunogen	Synthetic peptide of human PIP5K1C
Reactivity	Human, Mouse, Rat
Content	0.1 mg/ml
Host species	Rabbit
Ig class	Immunogen-specific rabbit IgG
Purification	Antigen affinity purification

Target information

Symbol	PIP5K1C
Full name	phosphatidylinositol-4-phosphate 5-kinase, type I, gamma
Synonyms	LCCS3; PIPKIg_v4; PIP5Kgamma; PIP5K-GAMMA
Swissprot	O60331

Target Background

This locus encodes a type I phosphatidylinositol 4-phosphate 5-kinase. The encoded protein catalyzes phosphorylation of phosphatidylinositol 4-phosphate, producing phosphatidylinositol 4,5-bisphosphate. This enzyme is found at synapses and has been found to play roles in endocytosis and cell migration. Mutations at this locus have been associated with lethal congenital contractural syndrome. Alternatively spliced transcript variants encoding different isoforms have been described.

订购热线: 4008-898-798

Applications

Western blotting

Predicted band size: 73 kDa

Positive control: A431 and hela cells, mouse brain tissue

Recommended dilution: 200-1000

Gel: 10% SDS-PAGE

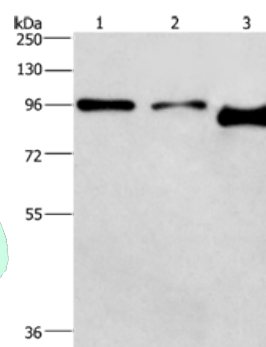
Lysate: 40 µg

Lane 1-3: A431 cells, hela cells, mouse brain tissue

Primary antibody: ml161375 (PIP5K1C Antibody) at dilution 1/500

Secondary antibody: Goat anti rabbit IgG at 1/8000 dilution

Exposure time: 2 minutes



ELISA

Recommended dilution: 1000-2000

联系电话: 4008-898-798, 021-61725725

联系QQ: 2881505695, 2881505696

邮箱: mlbio_cn@yeah.net

网址: www.mlbio.cn