

Anti-PCK1 antibody

Cat. No.	ml161383
Package	25 µl/100 µl/200 µl
Storage	-20°C, pH7.4 PBS, 0.05% NaN ₃ , 40% Glycerol

Product overview

Description	Anti-PCK1 rabbit polyclonal antibody
Applications	ELISA, WB
Immunogen	Synthetic peptide of human PCK1
Reactivity	Human, Mouse, Rat
Content	1.1 mg/ml
Host species	Rabbit
Ig class	Immunogen-specific rabbit IgG
Purification	Antigen affinity purification

Target information

Symbol	PCK1
Full name	phosphoenolpyruvate carboxykinase 1 (soluble)
Synonyms	PEPCK1; PEPCKC; PEPCK-C
Swissprot	P35558

Target Background

This gene is a main control point for the regulation of gluconeogenesis. The cytosolic enzyme encoded by this gene, along with GTP, catalyzes the formation of phosphoenolpyruvate from oxaloacetate, with the release of carbon dioxide and GDP. The expression of this gene can be regulated by insulin, glucocorticoids, glucagon, cAMP, and diet. Defects in this gene are a cause of cytosolic phosphoenolpyruvate carboxykinase deficiency. A mitochondrial isozyme of the encoded protein also has been characterized.

订购热线: 4008-898-798

Applications

Western blotting

Predicted band size: 69 kDa

Positive control: Mouse liver and kidney tissue

Recommended dilution: 500-2000

Gel: 6%SDS-PAGE

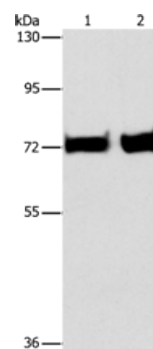
Lysate: 40 µg

Lane 1-2: Mouse liver tissue, Mouse kidney tissue

Primary antibody: ml161383(PCK1 Antibody) at dilution 1/375

Secondary antibody: Goat anti rabbit IgG at 1/8000 dilution

Exposure time: 30 seconds



ELISA

Recommended dilution: 2000-5000

联系电话: 4008-898-798, 021-61725725

联系QQ: 2881505695, 2881505696

邮箱: mlbio_cn@yeah.net

网址: www.mlbio.cn