

Anti-ARF6 antibody

Cat. No.	ml220257
Package	25 µl/100 µl/200 µl
Storage	-20°C, pH7.4 PBS, 0.05% NaN ₃ , 40% Glycerol

Product overview

Description	Anti-ARF6 rabbit polyclonal antibody
Applications	ELISA, WB, IHC
Immunogen	Fusion protein of human ARF6
Reactivity	Human, Mouse, Rat
Content	0.2 mg/ml
Host species	Rabbit
Ig class	Immunogen-specific rabbit IgG
Purification	Antigen affinity purification

Target information

Symbol	ARF6
Full name	ADP-ribosylation factor 6

Synonyms

Swissprot P62330

Target Background

This gene encodes a member of the human ARF gene family, which is part of the RAS superfamily. The ARF genes encode small guanine nucleotide-binding proteins that stimulate the ADP-ribosyltransferase activity of cholera toxin and play a role in vesicular trafficking and as activators of phospholipase D. The product of this gene is localized to the plasma membrane, and regulates vesicular trafficking, remodelling of membrane lipids, and signaling pathways that lead to actin remodeling. A pseudogene of this gene is located on chromosome 7.

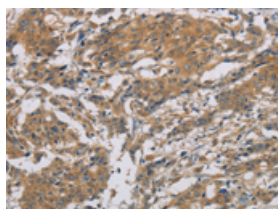
Applications

Immunohistochemistry

Predicted cell location: Cytoplasm

Positive control: Human gasrtic cancer

Recommended dilution: 25-100

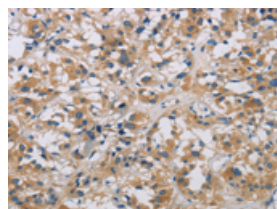


The image is immunohistochemistry of paraffin-embedded Human gasrtic cancer tissue using ml220257(ARF6 Antibody) at dilution 1/20. (Original magnification: ×200)

Predicted cell location: Cytoplasm

Positive control: Human thyroid cancer

Recommended dilution: 25-100



The image is immunohistochemistry of paraffin-embedded Human thyroid cancer tissue using ml220257(ARF6 Antibody) at dilution 1/20. (Original magnification: ×200)

Western blotting

Predicted band size:20 kDa

Positive control:A431 cells and human liver cancer tissue, 231 cells and human fetal liver tissue

Recommended dilution: 200-1000

Gel: 10%SDS-PAGE

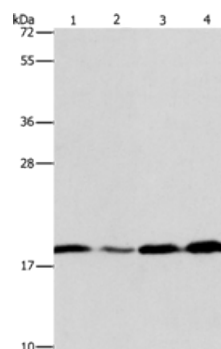
Lysate: 40 µg

Lane 1-4: A431 cells, human liver cancer tissue, 231 cells, human fetal liver tissue

Primary antibody: ml220257(ARF6 Antibody) at dilution 1/200

Secondary antibody: Goat anti rabbit IgG at 1/8000 dilution

Exposure time: 20 seconds



mlbio 酶联生物
Good elisakit producers
订购热线: 4008-898-798

ELISA

Recommended dilution: 1000-2000

联系电话: 4008-898-798, 021-61725725

联系QQ: 2881505695, 2881505696

邮箱: mlbio_cn@yeah.net

网址: www.mlbio.cn