

## Anti-PDE6C antibody

<b>Cat. No.</b>	ml161396
<b>Package</b>	25 µl/100 µl/200 µl
<b>Storage</b>	-20°C, pH7.4 PBS, 0.05% NaN <sub>3</sub> , 40% Glycerol

### Product overview

<b>Description</b>	Anti-PDE6C rabbit polyclonal antibody
<b>Applications</b>	ELISA, WB
<b>Immunogen</b>	Synthetic peptide of human PDE6C
<b>Reactivity</b>	Human
<b>Content</b>	1.1 mg/ml
<b>Host species</b>	Rabbit
<b>Ig class</b>	Immunogen-specific rabbit IgG
<b>Purification</b>	Antigen affinity purification

### Target information

<b>Symbol</b>	PDE6C
<b>Full name</b>	phosphodiesterase 6C, cGMP-specific, cone, alpha prime
<b>Synonyms</b>	COD4; ACHM5; PDEA2
<b>Swissprot</b>	P51160

### Target Background

Cone cGMP-specific 3',5'-cyclic phosphodiesterase subunit alpha' is an enzyme that in humans is encoded by the PDE6C gene. This gene encodes the alpha-prime subunit of cone phosphodiesterase, which is composed of a homodimer of two alpha-prime subunits and 3 smaller proteins of 11, 13, and 15 kDa. Mutations in this gene are associated with cone dystrophy type 4 (COD4).

订购热线: 4008-898-798

#### Applications

##### Western blotting

Predicted band size: 99 kDa

Positive control: A172 cells

Recommended dilution: 500-2000

Gel: 6% SDS-PAGE

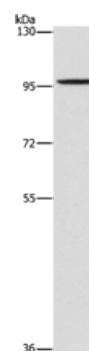
Lysate: 40 µg

Lane: A172 cells

Primary antibody: ml161396 (PDE6C Antibody) at dilution 1/1400

Secondary antibody: Goat anti rabbit IgG at 1/8000 dilution

Exposure time: 10 seconds



##### ELISA

Recommended dilution: 2000-5000

联系电话: 4008-898-798, 021-61725725

联系QQ: 2881505695, 2881505696

邮箱: [mlbio\\_cn@yeah.net](mailto:mlbio_cn@yeah.net)

网址: [www.mlbio.cn](http://www.mlbio.cn)