

Anti-TTR antibody

| | |
|-----------------|---|
| Cat. No. | ml220267 |
| Package | 25 µl/100 µl/200 µl |
| Storage | -20°C, pH7.4 PBS, 0.05% NaN ₃ , 40% Glycerol |

Product overview

| | |
|---------------------|-------------------------------------|
| Description | Anti-TTR rabbit polyclonal antibody |
| Applications | ELISA, WB, IHC |
| Immunogen | Fusion protein of human TTR |
| Reactivity | Human, Mouse, Rat |
| Content | 0.3 mg/ml |
| Host species | Rabbit |
| Ig class | Immunogen-specific rabbit IgG |
| Purification | Antigen affinity purification |

Target information

| | |
|------------------|---------------|
| Symbol | TTR |
| Full name | Transthyretin |

Synonyms CTS, CTS1, PALB, TBPA, HsT2651

Swissprot P02766

Target Background

This gene encodes transthyretin, one of the three prealbumins including alpha-1-antitrypsin, transthyretin and orosomucoid. Transthyretin is a carrier protein; it transports thyroid hormones in the plasma and cerebrospinal fluid, and also transports retinol (vitamin A) in the plasma. The protein consists of a tetramer of identical subunits. More than 80 different mutations in this gene have been reported; most mutations are related to amyloid deposition, affecting predominantly peripheral nerve and/or the heart, and a small portion of the gene mutations is non-amyloidogenic. The diseases caused by mutations include amyloidotic polyneuropathy, euthyroid hyperthyroxinaemia, amyloidotic vitreous opacities, cardiomyopathy, oculoleptomeningeal amyloidosis, meningocerebrovascular amyloidosis, carpal tunnel syndrome, etc.

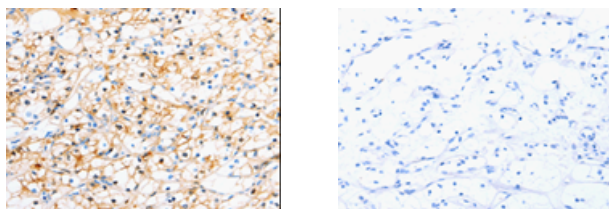
Applications

Immunohistochemistry

Predicted cell location: Cell membrane, Cytoplasm

Positive control: Human renal cancer

Recommended dilution: 25-100



The image on the left is immunohistochemistry of paraffin-embedded Human renal cancer tissue using ml220267(TTR Antibody) at dilution 1/50, on the right is treated with fusion protein. (Original magnification: $\times 200$)

Western blotting

Predicted band size: 16 kDa

Positive control: Mouse serum

Recommended dilution: 200-1000

Gel: 8+10%SDS-PAGE

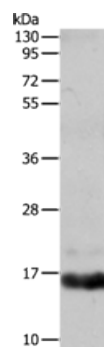
Lysate: 20 μ g

Lane: Mouse serum

Primary antibody: ml220267(TTR Antibody) at dilution 1/250

Secondary antibody: Goat anti rabbit IgG at 1/8000 dilution

Exposure time: 10 seconds



ELISA

Recommended dilution: 1000-5000

联系电话: 4008-898-798, 021-61725725

联系QQ: 2881505695, 2881505696

邮箱: mlbio_cn@yeah.net

网址: www.mlbio.cn