

Anti-C1QTNF3 antibody

| | |
|-----------------|---|
| Cat. No. | ml223823 |
| Package | 25 µl/100 µl/200 µl |
| Storage | -20°C, pH7.4 PBS, 0.05% NaN ₃ , 40% Glycerol |

Product overview

| | |
|---------------------|---|
| Description | Anti-C1QTNF3 rabbit polyclonal antibody |
| Applications | ELISA, WB, IHC |
| Immunogen | Fusion protein of human C1QTNF3 |
| Reactivity | Human, Mouse |
| Content | 0.7 mg/ml |
| Host species | Rabbit |
| Ig class | Immunogen-specific rabbit IgG |
| Purification | Antigen affinity purification |

Target information

| | |
|------------------|---|
| Symbol | C1QTNF3 |
| Full name | C1q and tumor necrosis factor related protein 3 |

Synonyms CORCS; CORCS; CTRP3; CORS26; C1ATNF3; CORS-26

Swissprot Q9BXJ4

Target Background

C1qTNF3 (Complement C1q TNF-related protein 3/CTRP3; also CORS26 and cartonectin) is a 30-32 kDa, secreted member of the C1q and TNF-related protein (CTRP) superfamily of molecules. It is expressed by a wide variety of cells, including smooth muscle cells, fibroblasts, adipocytes, monocytes and proliferating chondrocytes. C1qTNF3 is an anti-inflammatory agent that apparently blocks LPS activation of mononuclear cells. It also has marked proliferative activity on diverse cell types such as vascular smooth muscle, chondrocytes, and endothelium. Finally, C1qTNF3 is known to act on hepatocytes and suppress hepatocyte gluconeogenesis. Mature human C1qTNF3 is 224 amino acids (aa) in length (aa 23-246). It possesses an N-terminal collagen-like domain (aa 51-113) followed by a C-terminal globular region (aa 113-246). C1qTNF3 is monomeric when intracellular, but forms a 90 kDa homotrimer plus higher-order oligomer when secreted. There are at least two potential isoform variants. One is 40-42 kDa, glycosylated, and contains a 73 aa insertion after Glu28, while a second shows concurrent deletions of aa 46-69 and 82-105. The longer 40 kDa isoform is reported to form heterotrimers and oligomers with the standard 30 kDa isoform. This has the effect of protecting the standard isoform from proteolysis. Over aa 24-246, human C1qTNF3 shares 99% aa sequence identity with mouse C1qTNF3.

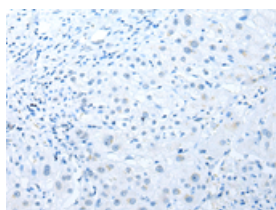
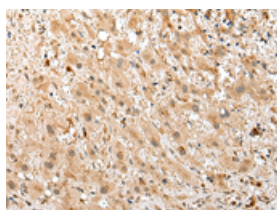
Applications

Immunohistochemistry

Predicted cell location: Secreted

Positive control: Human liver cancer

Recommended dilution: 25-100

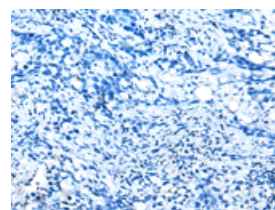
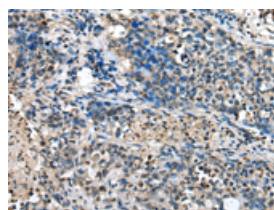


The image on the left is immunohistochemistry of paraffin-embedded Human liver cancer tissue using ml223823(C1QTNF3 Antibody) at dilution 1/25, on the right is treated with fusion protein. (Original magnification: ×200)

Predicted cell location: Secreted

Positive control: Human lung cancer

Recommended dilution: 25-100



The image on the left is immunohistochemistry of paraffin-embedded Human lung cancer tissue using ml223823(C1QTNF3 Antibody) at dilution 1/25, on the right is treated with fusion protein. (Original magnification: ×200)

Western blotting

Predicted band size: 27 kDa

Positive control: Human colorectal cancer tissue

Recommended dilution: 200-1000

Gel: 12%SDS-PAGE

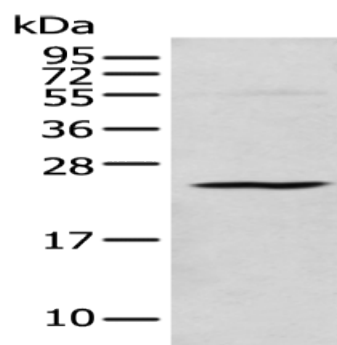
Lysate: 40 µg

Lane: Human colorectal cancer tissue

Primary antibody: ml223823(C1QTNF3 Antibody) at dilution 1/200

Secondary antibody: Goat anti rabbit IgG at 1/8000 dilution

Exposure time: 1 minute



ELISA

Recommended dilution: 5000-10000

联系电话: 4008-898-798, 021-61725725

联系QQ: 2881505695, 2881505696

邮箱: mlbio_cn@yeah.net

网址: www.mlbio.cn