

Anti-CNPY2 antibody

Cat. No.	ml223829
Package	25 µl/100 µl/200 µl
Storage	-20°C, pH7.4 PBS, 0.05% NaN ₃ , 40% Glycerol

Product overview

Description	Anti-CNPY2 rabbit polyclonal antibody
Applications	ELISA, WB, IHC
Immunogen	Full length fusion protein
Reactivity	Human, Mouse
Content	0.3 mg/ml
Host species	Rabbit
Ig class	Immunogen-specific rabbit IgG
Purification	Antigen affinity purification

Target information

Symbol	CNPY2
Full name	canopy FGF signaling regulator 2

Synonyms MSAP; TMEM4; ZSIG9; HP10390

Swissprot Q9Y2B0

Target Background

Positive regulator of neurite outgrowth by stabilizing myosin regulatory light chain (MRLC). It prevents MIR-mediated MRLC ubiquitination and its subsequent proteasomal degradation.

Applications

Immunohistochemistry

Predicted cell location: Cytoplasm and Nucleus

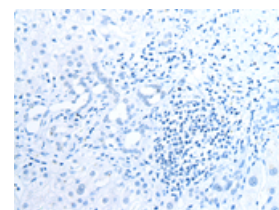
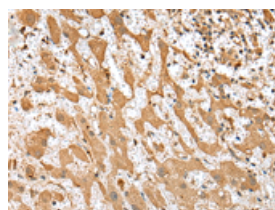
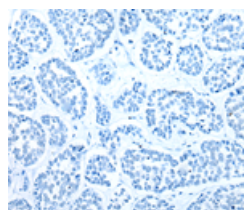
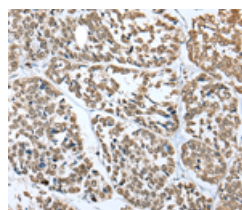
Predicted cell location: Cytoplasm and Nucleus

Positive control: Human esophagus cancer

Positive control: Human liver cancer

Recommended dilution: 25-100

Recommended dilution: 25-100



The image on the left is immunohistochemistry of paraffin-embedded Human esophagus cancer tissue using ml223829(CNPY2 Antibody) at dilution 1/25, on the right is treated with fusion protein. (Original magnification: ×200)

The image on the left is immunohistochemistry of paraffin-embedded Human liver cancer tissue using ml223829(CNPY2 Antibody) at dilution 1/25, on the right is treated with fusion protein. (Original magnification: ×200)

Western blotting

Predicted band size: 21 kDa

Positive control: PC-3 cell, Human fetal liver tissue, 231 cell, Human placenta tissue, Hela and HEPG2 cell

Recommended dilution: 200-1000

Gel: 12%SDS-PAGE

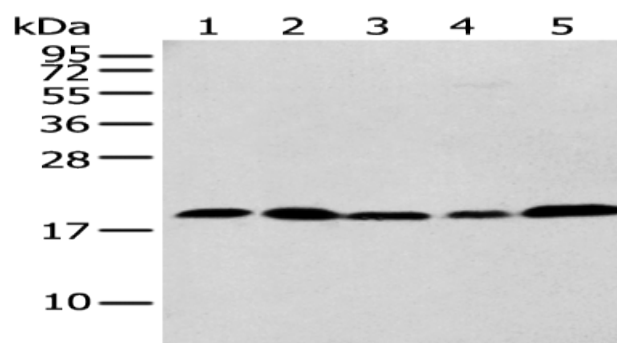
Lysate: 40 µg

Lane 1-6: PC-3 cell, Human fetal liver tissue, 231 cell, Human placenta tissue, Hela and HEPG2 cell

Primary antibody: ml223829(CNPY2 Antibody) at dilution 1/200

Secondary antibody: Goat anti rabbit IgG at 1/8000 dilution

Exposure time: 20 seconds



ELISA

Recommended dilution: 5000-10000

联系电话: 4008-898-798, 021-61725725

联系QQ: 2881505695, 2881505696

邮箱: mlbio_cn@yeah.net

网址: www.mlbio.cn