

Anti-EEF1E1 antibody

Cat. No.	ml223851
Package	25 µl/100 µl/200 µl
Storage	-20°C, pH7.4 PBS, 0.05% NaN ₃ , 40% Glycerol

Product overview

Description	Anti-EEF1E1 rabbit polyclonal antibody
Applications	ELISA, WB, IHC
Immunogen	Full length fusion protein
Reactivity	Human, Mouse
Content	1.1 mg/ml
Host species	Rabbit
Ig class	Immunogen-specific rabbit IgG
Purification	Antigen affinity purification

Target information

Symbol	EEF1E1
Full name	eukaryotic translation elongation factor 1 epsilon 1

Synonyms P18; AIMP3

Swissprot O43324

Target Background

This gene encodes a multifunctional protein that localizes to both the cytoplasm and nucleus. In the cytoplasm, the encoded protein is an auxiliary component of the macromolecular aminoacyl-tRNA synthase complex. However, its mouse homolog has been shown to translocate to the nucleus in response to DNA damage, and it plays a positive role in ATM/ATR-mediated p53 activation. Alternative splicing results in multiple transcript variants.

Applications

Immunohistochemistry

Predicted cell location: Cytoplasm or Nucleus

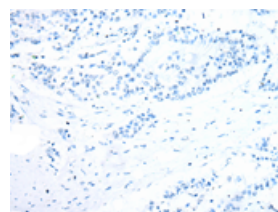
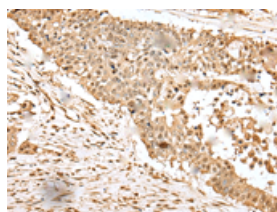
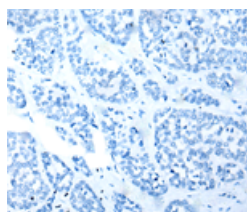
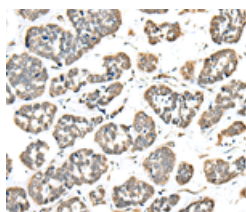
Predicted cell location: Cytoplasm or Nucleus

Positive control: Human esophagus cancer

Positive control: Human colorectal cancer

Recommended dilution: 25-100

Recommended dilution: 25-100



The image on the left is immunohistochemistry of paraffin-embedded Human esophagus cancer tissue using ml223851(EEF1E1 Antibody) at dilution 1/35, on the right is treated with fusion protein. (Original magnification: ×200)

The image on the left is immunohistochemistry of paraffin-embedded Human colorectal cancer tissue using ml223851(EEF1E1 Antibody) at dilution 1/35, on the right is treated with fusion protein. (Original magnification: ×200)

Western blotting

Predicted band size: 20 kDa

Positive control: A549 cell, Jurkat cell, Human testis tissue, 293T cell, Hepg2 cell and A431 cell

Recommended dilution: 500-2000

Gel: 12%SDS-PAGE

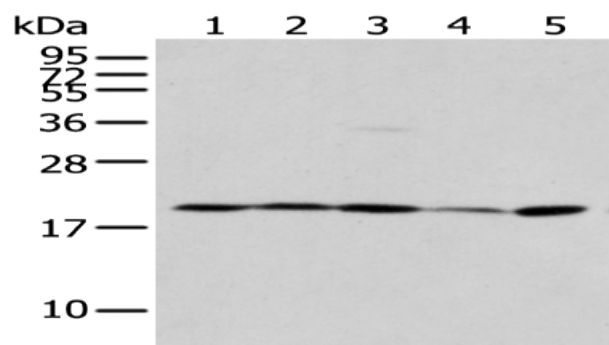
Lysate: 40 µg

Lane 1-6: A549 cell, Jurkat cell, Human testis tissue, 293T cell,
Hepg2 cell and A431 cell

Primary antibody: ml223851(EEF1E1 Antibody) at dilution 1/400

Secondary antibody: Goat anti rabbit IgG at 1/8000 dilution

Exposure time: 2 seconds



ELISA

Recommended dilution: 5000-10000

联系电话: 4008-898-798, 021-61725725

联系QQ: 2881505695, 2881505696

邮箱: mlbio_cn@yeah.net

网址: www.mlbio.cn