

Anti-CA14 antibody

Cat. No.	ml220347
Package	25 µl/100 µl/200 µl
Storage	-20°C, pH7.4 PBS, 0.05% NaN ₃ , 40% Glycerol

Product overview

Description	Anti-CA14 rabbit polyclonal antibody
Applications	ELISA, WB
Immunogen	Fusion protein of human CA14
Reactivity	Human, Mouse
Content	0.3 mg/ml
Host species	Rabbit
Ig class	Immunogen-specific rabbit IgG
Purification	Antigen affinity purification

Target information

Symbol	CA14
Full name	Carbonic anhydrase XIV
Synonyms	CAXIV
Swissprot	Q9ULX7

Target Background

Carbonic anhydrases (CAs) are a large family of zinc metalloenzymes that catalyze the reversible hydration of carbon dioxide. They participate in a variety of biological processes, including respiration, calcification, acid-base balance, bone resorption, and the formation of aqueous humor, cerebrospinal fluid, saliva, and gastric acid. They show extensive diversity in tissue distribution and in their subcellular localization. CA XIV is predicted to be a type I membrane protein and shares highest sequence similarity with the other transmembrane CA isoform, CA XII; however, they have different patterns of tissue-specific expression and thus may play different physiologic roles.

订购热线: 4008-898-798

Applications

Western blotting

Predicted band size: 38 kDa

Positive control: Human liver cancer tissue

Recommended dilution: 500-2000

Gel: 10% SDS-PAGE

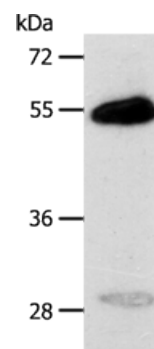
Lysate: 30 µg

Lane: Human liver cancer tissue

Primary antibody: ml220347(CA14 Antibody) at dilution 1/400

Secondary antibody: Goat anti rabbit IgG at 1/8000 dilution

Exposure time: 20 seconds



ELISA

Recommended dilution: 2000-5000

联系电话: 4008-898-798, 021-61725725

联系QQ: 2881505695, 2881505696

邮箱: mlbio_cn@yeah.net

网址: www.mlbio.cn