

## Anti-CTSG antibody

<b>Cat. No.</b>	ml220356
<b>Package</b>	25 µl/100 µl/200 µl
<b>Storage</b>	-20°C, pH7.4 PBS, 0.05% NaN <sub>3</sub> , 40% Glycerol

### Product overview

<b>Description</b>	Anti-CTSG rabbit polyclonal antibody
<b>Applications</b>	ELISA, WB
<b>Immunogen</b>	Fusion protein of human CTSG
<b>Reactivity</b>	Human, Mouse
<b>Content</b>	0.2 mg/ml
<b>Host species</b>	Rabbit
<b>Ig class</b>	Immunogen-specific rabbit IgG
<b>Purification</b>	Antigen affinity purification

### Target information

<b>Symbol</b>	CTSG
<b>Full name</b>	cathepsin G
<b>Synonyms</b>	CG, CATG
<b>Swissprot</b>	P08311

### Target Background

The protein encoded by this gene, a member of the peptidase S1 protein family, is found in azurophilic granules of neutrophilic polymorphonuclear leukocytes. The encoded protease has a specificity similar to that of chymotrypsin C, and may participate in the killing and digestion of engulfed pathogens, and in connective tissue remodeling at sites of inflammation. Transcript variants utilizing alternative polyadenylation signals exist for this gene.

订购热线: 4008-898-798

#### Applications

##### Western blotting

Predicted band size: 29 kDa

Positive control: Mouse brain tissue

Recommended dilution: 200-1000

Gel: 10%SDS-PAGE

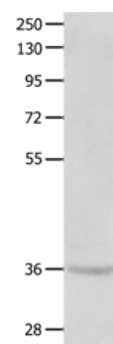
Lysate: 40 µg

Lane: Mouse brain tissue

Primary antibody: ml220356(CTSG Antibody) at dilution 1/300

Secondary antibody: Goat anti rabbit IgG at 1/8000 dilution

Exposure time: 1 minute



##### ELISA

Recommended dilution: 1000-2000

联系电话: 4008-898-798, 021-61725725

联系QQ: 2881505695, 2881505696

邮箱: [mlbio\\_cn@yeah.net](mailto:mlbio_cn@yeah.net)

网址: [www.mlbio.cn](http://www.mlbio.cn)