

Anti-PRTFDC1 antibody

Cat. No.	ml223908
Package	25 µl/100 µl/200 µl
Storage	-20°C, pH7.4 PBS, 0.05% NaN ₃ , 40% Glycerol

Product overview

Description	Anti-PRTFDC1 rabbit polyclonal antibody
Applications	ELISA, WB, IHC
Immunogen	Full length fusion protein
Reactivity	Human
Content	0.5 mg/ml
Host species	Rabbit
Ig class	Immunogen-specific rabbit IgG
Purification	Antigen affinity purification

Target information

Symbol	PRTFDC1
Full name	phosphoribosyl transferase domain containing 1

Synonyms	HHGP
Swissprot	Q9NRG1

Target Background

PRTFDC1 (phosphoribosyltransferase domain-containing protein 1), also known as HHGP, is a 225 amino acid protein that belongs to the purine/pyrimidine phosphoribosyltransferase family. The functions of PRTFDC1 are not well understood; however it has been suggested that it is frequently silenced in oral squamous-cell carcinomas by aberrant promoter hypermethylation. Conserved in vertebrates, PRTFDC1 is suggested to be a possible tumor-suppressor. PRTFDC1 is encoded by a gene which maps to chromosome 10. Spanning nearly 135 million base pairs, chromosome 10 makes up approximately 4.5% of the total DNA in cells and encodes nearly 1,200 genes. Three isoforms of PRTFDC1 exist due to alternative splicing events. Has low, barely detectable phosphoribosyltransferase activity (in vitro). Binds GMP, IMP and alpha-D-5-phosphoribosyl 1-pyrophosphate (PRPP). Is not expected to contribute to purine metabolism or GMP salvage.

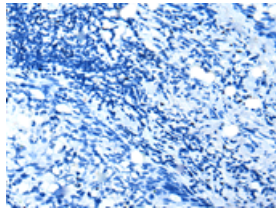
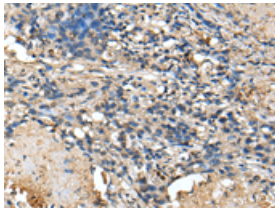
Applications

Immunohistochemistry

Predicted cell location: Cytoplasm

Positive control: Human lung cancer

Recommended dilution: 25-100



The image on the left is immunohistochemistry of paraffin-embedded Human lung cancer tissue using ml223908(PRTFDC1 Antibody) at dilution 1/25, on the right is treated with fusion protein. (Original magnification: $\times 200$)

Western blotting

Predicted band size: 26 kDa

Positive control: Human Ovarian cancer (granulosa cell tumor) tissue, Human testis tissue

Recommended dilution: 200-1000

Gel: 12%SDS-PAGE

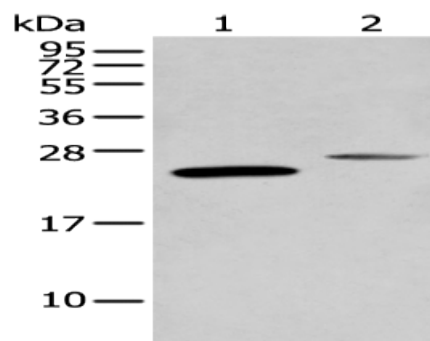
Lysate: 40 µg

Lane 1-2: Human Ovarian cancer (granulosa cell tumor)tissue, Human testis tissue

Primary antibody: ml223908(PRTFDC1 Antibody) at dilution 1/250

Secondary antibody: Goat anti rabbit IgG at 1/8000 dilution

Exposure time: 1 minute



ELISA

Recommended dilution: 5000-10000

联系电话: 4008-898-798, 021-61725725

联系QQ: 2881505695, 2881505696

邮箱: mlbio_cn@yeah.net

网址: www.mlbio.cn