

Anti-GLIPR1L1 antibody

Cat. No.	ml223923
Package	25 µl/100 µl/200 µl
Storage	-20°C, pH7.4 PBS, 0.05% NaN ₃ , 40% Glycerol

Product overview

Description	Anti-GLIPR1L1 rabbit polyclonal antibody
Applications	ELISA, WB
Immunogen	Fusion protein of human GLIPR1L1
Reactivity	Human
Content	0.2 mg/ml
Host species	Rabbit
Ig class	Immunogen-specific rabbit IgG
Purification	Antigen affinity purification

Target information

Symbol	GLIPR1L1
Full name	GLI pathogenesis-related 1 like 1
Synonyms	PRO7434; ALKN2972
Swissprot	Q6UWM5

Target Background

The GLIPR1 (glioma pathogenesis-related 1) family consists of three core members, designated GLIPR1, GLIPR1L1 (GLIPR1-like protein 1) and GLIPR1L2, which form a distinct subgroup within the cysteine-rich secretory protein (CRISP), antigen 5 and pathogenesis-related 1 (CAP) superfamily. Each member of the CAP superfamily has a conserved N-terminal CAP domain and a distinct C-terminal extension. CAP superfamily proteins are hypothesized to have roles in immunity, cell adhesion, carcinogenesis and male fertility. GLIPR1L1 is a 242 amino acid secreted protein. Highly expressed in testis, GLIPR1L1 exists as two isoforms produced by alternative splicing events. GLIPR1L1 is encoded by a gene that maps to human chromosome 12q21.1 and mouse chromosome 10 D2.

订购热线: 4008-898-798

Applications

Western blotting

Predicted band size: 27 kDa

Positive control: Human testis tissue

Recommended dilution: 500-2000

Gel: 12% SDS-PAGE

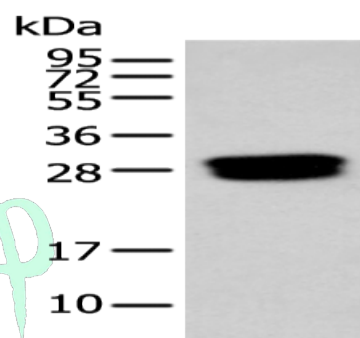
Lysate: 40 µg

Lane: Human testis tissue

Primary antibody: ml223923 (GLIPR1L1 Antibody) at dilution 1/250

Secondary antibody: Goat anti rabbit IgG at 1/8000 dilution

Exposure time: 15 seconds



ELISA

Recommended dilution: 5000-10000

联系电话: 4008-898-798, 021-61725725

联系QQ: 2881505695, 2881505696

邮箱: mlbio_cn@yeah.net

网址: www.mlbio.cn