

Anti-CBX2 antibody

Cat. No.	ml220367
Package	25 µl/100 µl/200 µl
Storage	-20°C, pH7.4 PBS, 0.05% NaN ₃ , 40% Glycerol

Product overview

Description	Anti-CBX2 rabbit polyclonal antibody
Applications	ELISA, WB
Immunogen	Fusion protein of human CBX2
Reactivity	Human, Mouse
Content	0.3 mg/ml
Host species	Rabbit
Ig class	Immunogen-specific rabbit IgG
Purification	Antigen affinity purification

Target information

Symbol	CBX2
Full name	chromobox homolog 2
Synonyms	M33, CDCA6, SRXY5
Swissprot	Q14781

Target Background

This gene encodes a component of the polycomb multiprotein complex, which is required to maintain the transcriptionally repressive state of many genes throughout development via chromatin remodeling and modification of histones. Disruption of this gene in mice results in male-to-female gonadal sex reversal. Mutations in this gene are also associated with gonadal dysgenesis in humans. Alternatively spliced transcript variants encoding different isoforms have been noted for this gene.

订购热线: 4008-898-798

Applications

Western blotting

Predicted band size: 23 kDa

Positive control: Human ovarian cancer and mouse heart tissue

Recommended dilution: 500-2000

Gel: 10+12% SDS-PAGE

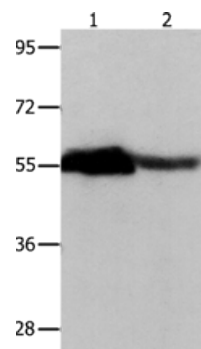
Lysate: 30 µg

Lane 1-2: Human ovarian cancer tissue, mouse heart tissue

Primary antibody: ml220367 (CBX2 Antibody) at dilution 1/350

Secondary antibody: Goat anti rabbit IgG at 1/8000 dilution

Exposure time: 20 seconds



ELISA

Recommended dilution: 1000-5000

联系电话: 4008-898-798, 021-61725725

联系QQ: 2881505695, 2881505696

邮箱: mlbio_cn@yeah.net

网址: www.mlbio.cn