

Anti-CLEC7A antibody

Cat. No.	D220382
Package	25 µl/100 µl/200 µl
Storage	-20°C, pH7.4 PBS, 0.05% NaN ₃ , 40% Glycerol

Product overview

Description	Anti-CLEC7A rabbit polyclonal antibody
Applications	ELISA, WB, IHC
Immunogen	Fusion protein of human CLEC7A
Reactivity	Human, Mouse
Content	0.1 mg/ml
Host species	Rabbit
Ig class	Immunogen-specific rabbit IgG
Purification	Antigen affinity purification

Target information

Symbol	CLEC7A
Full name	C-type lectin domain family 7, member A
Synonyms	BGR, CANDF4, DECTIN1, CLECSF12
Swissprot	Q9BXN2

Target Background

This gene encodes a member of the C-type lectin/C-type lectin-like domain (CTL/CTLD) superfamily. The encoded glycoprotein is a small type II membrane receptor with an extracellular C-type lectin-like domain fold and a cytoplasmic domain with an immunoreceptor tyrosine-based activation motif. It functions as a pattern-recognition receptor that recognizes a variety of beta-1,3-linked and beta-1,6-linked glucans from fungi and plants, and in this way plays a role in innate immune response. Alternate transcriptional splice variants, encoding different isoforms, have been characterized. This gene is closely linked to other CTL/CTLD superfamily members on chromosome 12p13 in the natural killer gene complex region.

订购热线: 4008-898-798

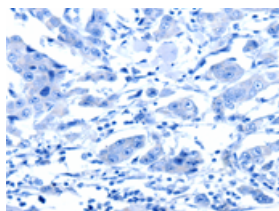
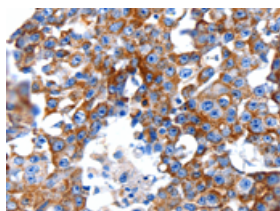
Applications

Immunohistochemistry

Predicted cell location: Cytoplasm

Positive control: Human breast cancer

Recommended dilution: 10-50

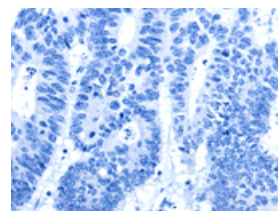
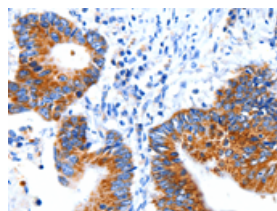


The image on the left is immunohistochemistry of paraffin-embedded Human breast cancer tissue using ml220382(CLEC7A Antibody) at dilution 1/5, on the right is treated with fusion protein. (Original magnification: $\times 200$)

Predicted cell location: Cytoplasm

Positive control: Human colon cancer

Recommended dilution: 10-50



The image on the left is immunohistochemistry of paraffin-embedded Human colon cancer tissue using ml220382(CLEC7A Antibody) at dilution 1/5, on the right is treated with fusion protein. (Original magnification: $\times 200$)

Western blotting

Predicted band size: 28 kDa

Positive control: SP20 and RAW264.7 cells

Recommended dilution: 500-2000

Gel: 12% SDS-PAGE

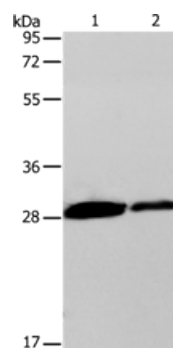
Lysate: 40 μ g

Lane 1-2: SP20 cells, RAW264.7 cells

Primary antibody: ml220382(CLEC7A Antibody) at dilution 1/200

Secondary antibody: Goat anti rabbit IgG at 1/8000 dilution

Exposure time: 30 seconds



ELISA

Recommended dilution: 1000-5000

联系电话: 4008-898-798, 021-61725725

联系QQ: 2881505695, 2881505696

邮箱: mlbio_cn@yeah.net

网址: www.mlbio.cn