

Anti-CDK20 antibody

Cat. No.	D220390
Package	25 µl/100 µl/200 µl
Storage	-20°C, pH7.4 PBS, 0.05% NaN ₃ , 40% Glycerol

Product overview

Description	Anti-CDK20 rabbit polyclonal antibody
Applications	ELISA, WB, IHC
Immunogen	Fusion protein of human CDK20
Reactivity	Human, Mouse, Rat
Content	0.3 mg/ml
Host species	Rabbit
Ig class	Immunogen-specific rabbit IgG
Purification	Antigen affinity purification

Target information

Symbol	CDK20
Full name	cyclin-dependent kinase 20
Synonyms	P42, CCRK, CDCH, PNQALRE
Swissprot	Q8IZL9

Target Background

The protein encoded by this gene contains a kinase domain most closely related to the cyclin-dependent protein kinases. The encoded kinase may activate cyclin-dependent kinase 2 and is involved in cell growth. Alternatively spliced transcript variants encoding distinct isoforms have been reported.

订购热线: 4008-898-798

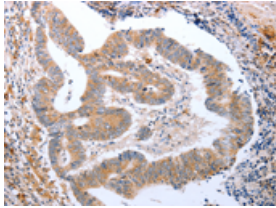
Applications

Immunohistochemistry

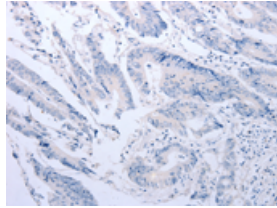
Predicted cell location: Cytoplasm

Positive control: Human colon cancer

Recommended dilution: 25-100



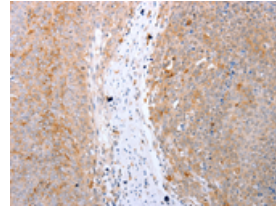
The image on the left is immunohistochemistry of paraffin-embedded Human colon cancer tissue using ml220390(CDK20 Antibody) at dilution 1/15, on the right is treated with fusion protein. (Original magnification: $\times 200$)



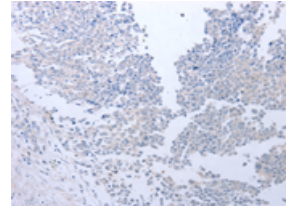
Predicted cell location: Cytoplasm

Positive control: Human ovarian cancer

Recommended dilution: 25-100



The image on the left is immunohistochemistry of paraffin-embedded Human ovarian cancer tissue using ml220390(CDK20 Antibody) at dilution 1/15, on the right is treated with fusion protein. (Original magnification: $\times 200$)



Western blotting

Predicted band size: 31 kDa

Positive control: HT-29 cells

Recommended dilution: 200-1000

Gel: 8%SDS-PAGE

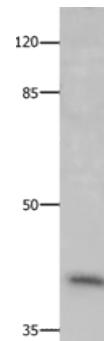
Lysate: 40 μ g

Lane: HT29 cells

Primary antibody: ml220390(CDK20 Antibody) at dilution 1/300

Secondary antibody: Goat anti rabbit IgG at 1/8000 dilution

Exposure time: 5 minutes



ELISA

Recommended dilution: 1000-2000

联系电话: 4008-898-798, 021-61725725

联系QQ: 2881505695, 2881505696

邮箱: mlbio_cn@yeah.net

网址: www.mlbio.cn