

Anti-CDK2 antibody

Cat. No.	ml220395
Package	25 µl/100 µl/200 µl
Storage	-20°C, pH7.4 PBS, 0.05% NaN ₃ , 40% Glycerol

Product overview

Description	Anti-CDK2 rabbit polyclonal antibody
Applications	ELISA, WB, IHC
Immunogen	Fusion protein of human CDK2
Reactivity	Human, Mouse, Rat
Content	0.2 mg/ml
Host species	Rabbit
Ig class	Immunogen-specific rabbit IgG
Purification	Antigen affinity purification

Target information

Symbol	CDK2
Full name	cyclin-dependent kinase 2

Synonyms p33(CDK2)

Swissprot P24941

Target Background

The protein encoded by this gene is a member of the Ser/Thr protein kinase family. This protein kinase is highly similar to the gene products of *S. cerevisiae* cdc28, and *S. pombe* cdc2. It is a catalytic subunit of the cyclin-dependent protein kinase complex, whose activity is restricted to the G1-S phase, and essential for cell cycle G1/S phase transition. This protein associates with and regulated by the regulatory subunits of the complex including cyclin A or E, CDK inhibitor p21Cip1 (CDKN1A) and p27Kip1 (CDKN1B). Its activity is also regulated by its protein phosphorylation. Two alternatively spliced variants and multiple transcription initiation sites of this gene have been reported.

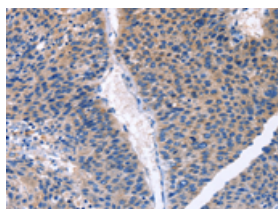
Applications

Immunohistochemistry

Predicted cell location: Cytoplasm

Positive control: Human liver cancer

Recommended dilution: 25-100

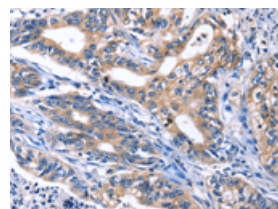


The image on the left is immunohistochemistry of paraffin-embedded Human liver cancer tissue using ml220395(CDK2 Antibody) at dilution 1/30, on the right is treated with fusion protein. (Original magnification: $\times 200$)

Predicted cell location: Cytoplasm

Positive control: Human gastric cancer

Recommended dilution: 25-100



The image on the left is immunohistochemistry of paraffin-embedded Human gastric cancer tissue using ml220395(CDK2 Antibody) at dilution 1/30, on the right is treated with fusion protein. (Original magnification: $\times 200$)

Western blotting

Predicted band size: 34 kDa

Positive control: 231 and NIH/3T3 cells, hela cells and human fetal liver tissue

Recommended dilution: 200-1000

Gel: 8%SDS-PAGE

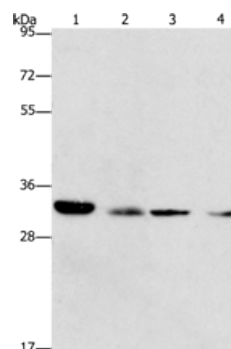
Lysate: 40 μ g

Lane 1-4: 231 cells, NIH/3T3 cells, hela cells, human fetal liver tissue

Primary antibody: ml220395(CDK2 Antibody) at dilution 1/275

Secondary antibody: Goat anti rabbit IgG at 1/8000 dilution

Exposure time: 1 minute



ELISA

Recommended dilution: 2000-5000

联系电话: 4008-898-798, 021-61725725

联系QQ: 2881505695, 2881505696

邮箱: mlbio_cn@yeah.net

网址: www.mlbio.cn