

Anti-CDK19 antibody

Cat. No.	ml161543
Package	25 µl/100 µl/200 µl
Storage	-20°C, pH7.4 PBS, 0.05% NaN ₃ , 40% Glycerol

Product overview

Description	Anti-CDK19 rabbit polyclonal antibody
Applications	ELISA, WB, IHC
Immunogen	Synthetic peptide of human CDK19
Reactivity	Human, Mouse
Content	0.8 mg/ml
Host species	Rabbit
Ig class	Immunogen-specific rabbit IgG
Purification	Antigen affinity purification

Target information

Symbol	CDK19
Full name	cyclin-dependent kinase 19
Synonyms	CDK11; CDC2L6; bA346C16.3
Swissprot	Q9BWU1

Target Background

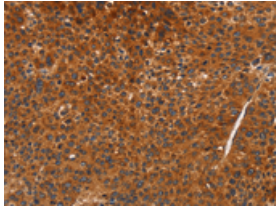
This gene encodes a protein that is one of the components of the Mediator coactivator complex. The Mediator complex is a multiprotein complex required for transcriptional activation by DNA binding transcription factors of genes transcribed by RNA polymerase II. The protein encoded by this gene is similar to cyclin-dependent kinase 8 which can also be a component of the Mediator complex.

订购热线: 4008-898-798

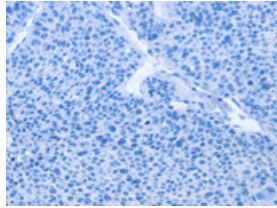
Applications

Immunohistochemistry

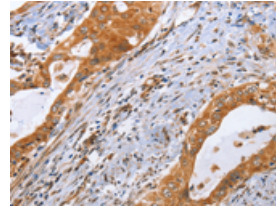
Predicted cell location: Cytoplasm
Positive control: Human liver cancer
Recommended dilution: 100-300



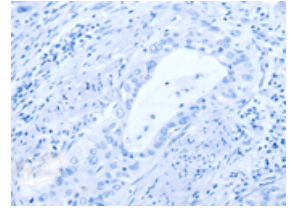
The image on the left is immunohistochemistry of paraffin-embedded Human liver cancer tissue using ml161543(CDK19 Antibody) at dilution 1/70, on the right is treated with synthetic peptide. (Original magnification: $\times 200$)



Predicted cell location: Cytoplasm
Positive control: Human cervical cancer
Recommended dilution: 100-300



The image on the left is immunohistochemistry of paraffin-embedded Human cervical cancer tissue using ml161543(CDK19 Antibody) at dilution 1/70, on the right is treated with synthetic peptide. (Original magnification: $\times 200$)



Western blotting

Predicted band size: 57 kDa
Positive control: Mouse heart tissue
Recommended dilution: 500-2000

Gel: 6%SDS-PAGE

Lysate: 40 μ g

Lane: Mouse heart tissue

Primary antibody: ml161543(CDK19 Antibody) at dilution 1/1000

Secondary antibody: Goat anti rabbit IgG at 1/8000 dilution

Exposure time: 3 seconds



ELISA

Recommended dilution: 2000-10000

联系电话: 4008-898-798, 021-61725725

联系QQ: 2881505695, 2881505696

邮箱: mlbio_cn@yeah.net

网址: www.mlbio.cn