

Anti-CDK5 antibody

Cat. No.	ml220397
Package	25 µl/100 µl/200 µl
Storage	-20°C, pH7.4 PBS, 0.05% NaN ₃ , 40% Glycerol

Product overview

Description	Anti-CDK5 rabbit polyclonal antibody
Applications	ELISA, WB, IHC
Immunogen	Fusion protein of human CDK5
Reactivity	Human, Mouse, Rat
Content	0.2 mg/ml
Host species	Rabbit
Ig class	Immunogen-specific rabbit IgG
Purification	Antigen affinity purification

Target information

Symbol	CDK5
Full name	cyclin-dependent kinase 5

Synonyms PSSALRE

Swissprot Q00535

Target Background

Cell division protein kinase 5 is an enzyme that in humans is encoded by the CDK5 gene. The protein encoded by this gene is part of the cyclin-dependent kinase family. CDK5 is required for proper development of the brain and to be activated, CDK5 must associate with CDK5R1 or CDK5R2. Cdk5 is involved in the processes of neuronal maturation and migration, phosphorylating the key intracellular adaptor of the reelin signaling chain. Experiments performed on mice lacking p35, a necessary activator of cdk5 in early brain development, showed that the normal layering of neurons was reversed in the cortex. This disrupted lamination again implicated cdk5 in neuronal migration and plasticity. Cdk5 is also involved in the regulation of synaptic vesicle exocytosis via phosphorylation of munc-18.

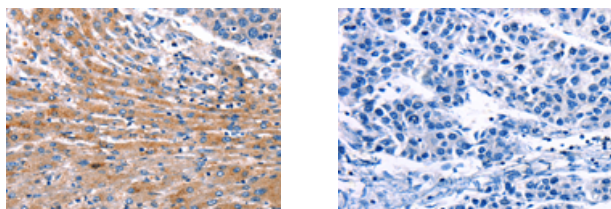
Applications

Immunohistochemistry

Predicted cell location: Cytoplasm

Positive control: Human liver cancer

Recommended dilution: 10-50



The image on the left is immunohistochemistry of paraffin-embedded Human liver cancer tissue using ml220397(CDK5 Antibody) at dilution 1/10, on the right is treated with fusion protein. (Original magnification: $\times 200$)

Western blotting

Predicted band size: 33 kDa

Positive control: Human fetal brain and colon cancer tissue

Recommended dilution: 200-1000

Gel: 10+12%SDS-PAGE

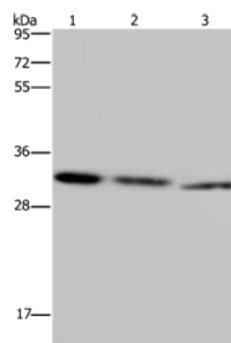
Lysate: 30 µg

Lane 1-2: Human fetal brain tissue, Human colon cancer tissue

Primary antibody: ml220397(CDK5 Antibody) at dilution 1/150

Secondary antibody: Goat anti rabbit IgG at 1/8000 dilution

Exposure time: 5 minutes



ELISA

Recommended dilution: 1000-2000

联系电话: 4008-898-798, 021-61725725

联系QQ: 2881505695, 2881505696

邮箱: mlbio_cn@yeah.net

网址: www.mlbio.cn