

## Anti-ZBTB5 antibody

|                 |   |
|-----------------|---|
| <b>Cat. No.</b> | ml223980  |
| <b>Package</b>  | 25 µl/100 µl/200 µl                                     |
| <b>Storage</b>  | -20°C, pH7.4 PBS, 0.05% NaN <sub>3</sub> , 40% Glycerol |

### Product overview

|                     |                                       |
|---------------------|---------------------------------------|
| <b>Description</b>  | Anti-ZBTB5 rabbit polyclonal antibody |
| <b>Applications</b> | ELISA, WB, IHC                        |
| <b>Immunogen</b>    | Fusion protein of human ZBTB5         |
| <b>Reactivity</b>   | Human, Mouse                          |
| <b>Content</b>      | 0.8 mg/ml                             |
| <b>Host species</b> | Rabbit                                |
| <b>Ig class</b>     | Immunogen-specific rabbit IgG         |
| <b>Purification</b> | Antigen affinity purification         |

### Target information

|                  |   |
|------------------|---|
| <b>Symbol</b>    | ZBTB5                                   |
| <b>Full name</b> | zinc finger and BTB domain containing 5 |

#### Synonyms

Swissprot O15062

#### Target Background

Zinc finger and BTB domain-containing protein 5 (ZBTB5) is a 677 amino acid member of the Krüppel C2H2-type zinc-finger protein family. Localized to the nucleus, ZBTB5 contains a BTB domain, also known as a POZ domain, which inhibits DNA binding and mediates homotypic and heterotypic dimerization. Characteristics of the BTB domain suggest that ZBTB5 functions as a transcription regulator.

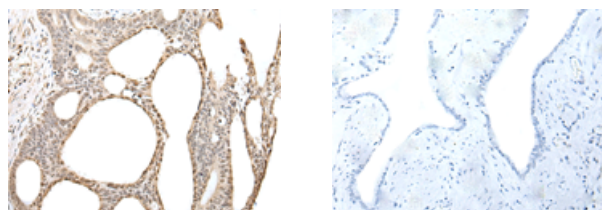
## Applications

### Immunohistochemistry

Predicted cell location: Nucleus and Cytoplasm

Positive control: Human gastric cancer

Recommended dilution: 30-150



The image on the left is immunohistochemistry of paraffin-embedded Human gastric cancer tissue using ml223980(ZBTB5 Antibody) at dilution 1/40, on the right is treated with fusion protein.  
(Original magnification: ×200)

### Western blotting

Predicted band size: 74 kDa

Positive control: A431, K562 and TM4 cell lysates

Recommended dilution: 500-2000

Gel: 6%SDS-PAGE

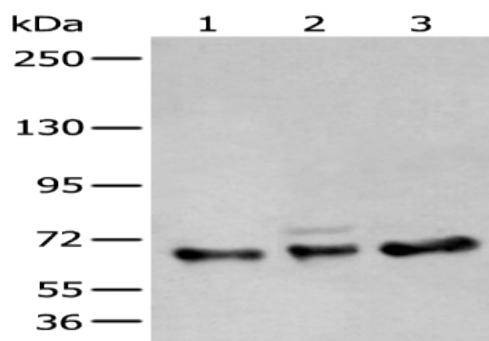
Lysate: 40 µg

Lane 1-3: A431, K562 and TM4 cell lysates

Primary antibody: ml223980(ZBTB5 Antibody) at dilution 1/400

Secondary antibody: Goat anti rabbit IgG at 1/8000 dilution

Exposure time: 20 seconds



#### ELISA

Recommended dilution: 5000-10000

联系电话: 4008-898-798, 021-61725725

联系QQ: 2881505695, 2881505696

邮箱: [mlbio\\_cn@yeah.net](mailto:mlbio_cn@yeah.net)

网址: [www.mlbio.cn](http://www.mlbio.cn)