

## Anti-PARK7 antibody

<b>Cat. No.</b>	ml221103
<b>Package</b>	25 µl/100 µl/200 µl
<b>Storage</b>	-20°C, pH7.4 PBS, 0.05% NaN <sub>3</sub> , 40% Glycerol

### Product overview

<b>Description</b>	Anti-PARK7 rabbit polyclonal antibody
<b>Applications</b>	ELISA, WB
<b>Immunogen</b>	Fusion protein of human PARK7
<b>Reactivity</b>	Human, Mouse, Rat
<b>Content</b>	0.192 mg/ml
<b>Host species</b>	Rabbit
<b>Ig class</b>	Immunogen-specific rabbit IgG
<b>Purification</b>	Antigen affinity purification

### Target information

<b>Symbol</b>	PARK7
<b>Full name</b>	parkinson protein 7
<b>Synonyms</b>	DJ1, DJ-1
<b>Swissprot</b>	Q99497

### Target Background

The product of this gene belongs to the peptidase C56 family of proteins. It acts as a positive regulator of androgen receptor-dependent transcription. It may also function as a redox-sensitive chaperone, as a sensor for oxidative stress, and it apparently protects neurons against oxidative stress and cell death. Defects in this gene are the cause of autosomal recessive early-onset Parkinson disease 7. Two transcript variants encoding the same protein have been identified for this gene.

订购热线: 4008-898-798

#### Applications

##### Western blotting

Predicted band size: 20 kDa

Positive control: HT-29 cells

Recommended dilution: 200-1000

Gel: 8+10% SDS-PAGE

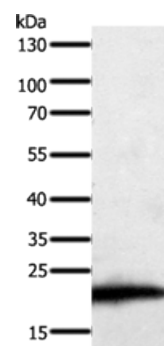
Lysate: 60 µg

Lane: HT29 cells

Primary antibody: ml221103(PARK7 Antibody) at dilution 1/200

Secondary antibody: Goat anti rabbit IgG at 1/8000 dilution

Exposure time: 2 minutes



##### ELISA

Recommended dilution: 1000-5000

联系电话: 4008-898-798, 021-61725725

联系QQ: 2881505695, 2881505696

邮箱: [mlbio\\_cn@yeah.net](mailto:mlbio_cn@yeah.net)

网址: [www.mlbio.cn](http://www.mlbio.cn)