

Anti-ZNF8 antibody

Cat. No.	ml224045
Package	25 µl/100 µl/200 µl
Storage	-20°C, pH7.4 PBS, 0.05% NaN ₃ , 40% Glycerol

Product overview

Description	Anti-ZNF8 rabbit polyclonal antibody
Applications	ELISA, WB, IHC
Immunogen	Fusion protein of human ZNF8
Reactivity	Human
Content	0.5 mg/ml
Host species	Rabbit
Ig class	Immunogen-specific rabbit IgG
Purification	Antigen affinity purification

Target information

Symbol	ZNF8
Full name	zinc finger protein 8

Synonyms HF.18; Zfp128

Swissprot P17098

Target Background

ZNF8 (zinc finger protein 8) is a 575 amino acid protein that belongs to the Krüppel C2H2-type zinc-finger protein family and contains seven C2H2-type zinc fingers and a KRAB domain. Localizing to the nucleus and ubiquitously expressed, ZNF8 is thought to play a role in transcriptional regulation and is encoded by a gene that maps to human chromosome 19q13.43.

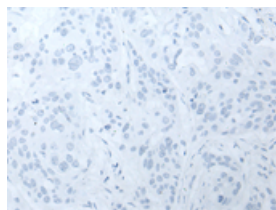
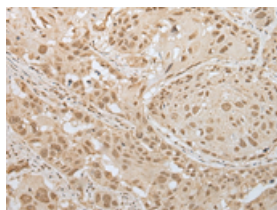
Applications

Immunohistochemistry

Predicted cell location: Nucleus or Cytoplasm

Positive control: Human esophagus cancer

Recommended dilution: 25-100

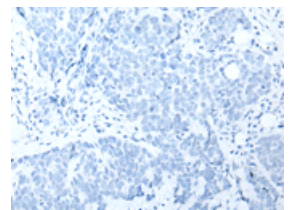
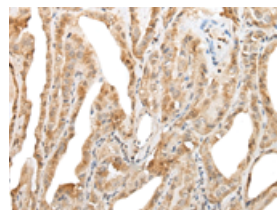


The image on the left is immunohistochemistry of paraffin-embedded Human esophagus cancer tissue using ml224045(ZNF8 Antibody) at dilution 1/30, on the right is treated with fusion protein. (Original magnification: ×200)

Predicted cell location: Nucleus or Cytoplasm

Positive control: Human thyroid cancer

Recommended dilution: 25-100



The image on the left is immunohistochemistry of paraffin-embedded Human thyroid cancer tissue using ml224045(ZNF8 Antibody) at dilution 1/30, on the right is treated with fusion protein. (Original magnification: ×200)

Western blotting

Predicted band size: 65 kDa

Positive control: SKOV3, A549 and HEPG2 cell lysates

Recommended dilution: 200-1000

Gel: 8%SDS-PAGE

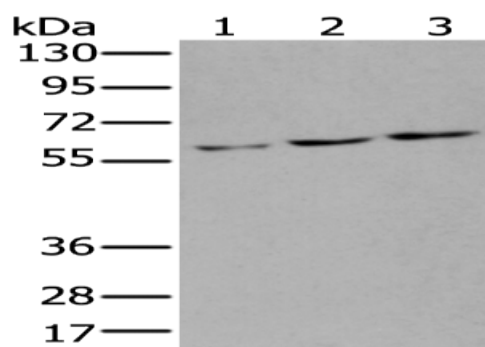
Lysate: 40 μ g

Lane 1-3: SKOV3,A549 and HEPG2 cell lysates

Primary antibody: ml224045(ZNF8 Antibody) at dilution 1/200

Secondary antibody: Goat anti rabbit IgG at 1/8000 dilution

Exposure time: 5 seconds



ELISA

Recommended dilution: 5000-10000

联系电话: 4008-898-798, 021-61725725

联系QQ: 2881505695, 2881505696

邮箱: mlbio_cn@yeah.net

网址: www.mlbio.cn