

Anti-RRM1 antibody

Cat. No.	ml221160
Package	25 µl/100 µl/200 µl
Storage	-20°C, pH7.4 PBS, 0.05% NaN ₃ , 40% Glycerol

Product overview

Description	Anti-RRM1 rabbit polyclonal antibody
Applications	ELISA, WB
Immunogen	Fusion protein of human RRM1
Reactivity	Human, Mouse
Content	0.3 mg/ml
Host species	Rabbit
Ig class	Immunogen-specific rabbit IgG
Purification	Antigen affinity purification

Target information

Symbol	RRM1
Full name	Ribonucleotide reductase M1
Synonyms	R1; RR1; RIR1
Swissprot	P23921

Target Background

This gene encodes one of two non-identical subunits that constitute ribonucleoside-diphosphate reductase, an enzyme essential for the production of deoxyribonucleotides prior to DNA synthesis in S phase of dividing cells. It is one of several genes located in the imprinted gene domain of 11p15.5, an important tumor-suppressor gene region. Alterations in this region have been associated with the Beckwith-Wiedemann syndrome, Wilms tumor, rhabdomyosarcoma, adrenocortical carcinoma, and lung, ovarian, and breast cancer. This gene may play a role in malignancies and disease that involve this region.

订购热线: 4008-898-798

Applications

Western blotting

Predicted band size: 90 kDa

Positive control: Hela cells

Recommended dilution: 500-2000

Gel: 10% SDS-PAGE

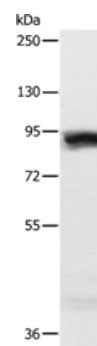
Lysate: 50 µg

Lane: Hela cells

Primary antibody: ml221160(RRM1 Antibody) at dilution 1/600

Secondary antibody: Goat anti rabbit IgG at 1/8000 dilution

Exposure time: 30 seconds



ELISA

Recommended dilution: 2000-5000

联系电话: 4008-898-798, 021-61725725

联系QQ: 2881505695, 2881505696

邮箱: mlbio_cn@yeah.net

网址: www.mlbio.cn