

Anti-IL18R1 antibody

Cat. No.	ml220503
Package	25 µl/100 µl/200 µl
Storage	-20°C, pH7.4 PBS, 0.05% NaN ₃ , 40% Glycerol

Product overview

Description	Anti-IL18R1 rabbit polyclonal antibody
Applications	ELISA, WB
Immunogen	Fusion protein of human IL18R1
Reactivity	Human, Mouse
Content	0.3 mg/ml
Host species	Rabbit
Ig class	Immunogen-specific rabbit IgG
Purification	Antigen affinity purification

Target information

Symbol	IL18R1
Full name	interleukin 18 receptor 1
Synonyms	CD218a, IL18RA, IL1RRP, CDw218a, IL-1Rrp
Swissprot	Q13478

Target Background

The protein encoded by this gene is a cytokine receptor that belongs to the interleukin 1 receptor family. This receptor specifically binds interleukin 18 (IL18), and is essential for IL18 mediated signal transduction. IFN-alpha and IL12 are reported to induce the expression of this receptor in NK and T cells. This gene along with four other members of the interleukin 1 receptor family, including IL1R2, IL1R1, ILRL2 (IL-1Rrp2), and IL1RL1 (T1/ST2), form a gene cluster on chromosome 2q.

订购热线: 4008-898-798

Applications

Western blotting

Predicted band size: 62 kDa

Positive control: Human thyroid cancer tissue

Recommended dilution: 200-1000

Gel: 8%SDS-PAGE

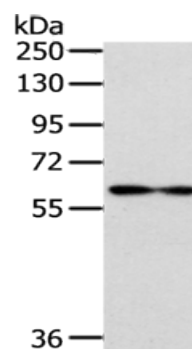
Lysate: 40 µg

Lane: Human thyroid cancer tissue

Primary antibody: ml220503(IL18R1 Antibody) at dilution 1/222

Secondary antibody: Goat anti rabbit IgG at 1/8000 dilution

Exposure time: 2 minutes



ELISA

Recommended dilution: 1000-2000

联系电话: 4008-898-798, 021-61725725

联系QQ: 2881505695, 2881505696

邮箱: mlbio_cn@yeah.net

网址: www.mlbio.cn