

Anti-PVALB antibody

Cat. No.	ml221187
Package	25 µl/100 µl/200 µl
Storage	-20°C, pH7.4 PBS, 0.05% NaN ₃ , 40% Glycerol

Product overview

Description	Anti-PVALB rabbit polyclonal antibody
Applications	ELISA, WB
Immunogen	Fusion protein of human PVALB
Reactivity	Human, Mouse, Rat
Content	0.2 mg/ml
Host species	Rabbit
Ig class	Immunogen-specific rabbit IgG
Purification	Antigen affinity purification

Target information

Symbol	PVALB
Full name	parvalbumin
Synonyms	D22S749
Swissprot	P20472

Target Background

Parvalbumin is a calcium-binding albumin protein with low molecular weight (typically 9-11 kDa). It has three EF hand motifs and is structurally related to calmodulin and troponin C. Parvalbumin is localised in fast-contracting muscles, where its levels are highest, and in the brain and some endocrine tissues. Parvalbumin is a small, stable protein containing EF-hand type calcium binding sites. It is involved in calcium signaling. Typically, this protein is broken into three domains, domains AB, CD and EF, each individually containing a helix-loop-helix motif.

订购热线: 4008-898-798

Applications

Western blotting

Predicted band size: 12 kDa

Positive control: Human fetal brain tissue

Recommended dilution: 500-2000

Gel: 12%SDS-PAGE

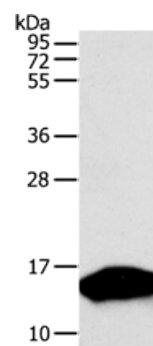
Lysate: 50 µg

Lane: Human fetal brain tissue

Primary antibody: ml221187(PVALB Antibody) at dilution 1/300

Secondary antibody: Goat anti rabbit IgG at 1/8000 dilution

Exposure time: 30 seconds



ELISA

Recommended dilution: 2000-5000

联系电话: 4008-898-798, 021-61725725

联系QQ: 2881505695, 2881505696

邮箱: mlbio_cn@yeah.net

网址: www.mlbio.cn