

## Anti-SIRT7 antibody

<b>Cat. No.</b>	ml221223
<b>Package</b>	25 µl/100 µl/200 µl
<b>Storage</b>	-20°C, pH7.4 PBS, 0.05% NaN <sub>3</sub> , 40% Glycerol

### Product overview

<b>Description</b>	Anti-SIRT7 rabbit polyclonal antibody
<b>Applications</b>	ELISA, WB
<b>Immunogen</b>	Fusion protein of human SIRT7
<b>Reactivity</b>	Human, Mouse, Rat
<b>Content</b>	0.3 mg/ml
<b>Host species</b>	Rabbit
<b>Ig class</b>	Immunogen-specific rabbit IgG
<b>Purification</b>	Antigen affinity purification

### Target information

<b>Symbol</b>	SIRT7
<b>Full name</b>	Sirtuin 7
<b>Synonyms</b>	SIR2L7
<b>Swissprot</b>	Q9NRC8

### Target Background

This gene encodes a member of the sirtuin family of proteins, homologs to the yeast Sir2 protein. Members of the sirtuin family are characterized by a sirtuin core domain and grouped into four classes. The functions of human sirtuins have not yet been determined; however, yeast sirtuin proteins are known to regulate epigenetic gene silencing and suppress recombination of rDNA. Studies suggest that the human sirtuins may function as intracellular regulatory proteins with mono-ADP-ribosyltransferase activity. The protein encoded by this gene is included in class IV of the sirtuin family.

订购热线: 4008-898-798

#### Applications

##### Western blotting

Predicted band size: 45 kDa

Positive control: Mouse liver tissue

Recommended dilution: 500-2000

Gel: 12% SDS-PAGE

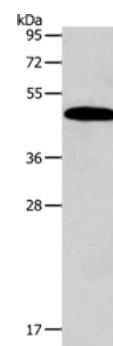
Lysate: 40 µg

Lane: Mouse liver tissue

Primary antibody: ml221223(SIRT7 Antibody) at dilution 1/600

Secondary antibody: Goat anti rabbit IgG at 1/8000 dilution

Exposure time: 20 seconds



##### ELISA

Recommended dilution: 2000-5000

联系电话: 4008-898-798, 021-61725725

联系QQ: 2881505695, 2881505696

邮箱: [mlbio\\_cn@yeah.net](mailto:mlbio_cn@yeah.net)

网址: [www.mlbio.cn](http://www.mlbio.cn)