

Anti-SNRPA antibody

Cat. No.	ml224122
Package	25 µl/100 µl/200 µl
Storage	-20°C, pH7.4 PBS, 0.05% NaN ₃ , 40% Glycerol

Product overview

Description	Anti-SNRPA rabbit polyclonal antibody
Applications	ELISA, WB, IHC
Immunogen	Full length fusion protein
Reactivity	Human, Mouse
Content	0.5 mg/ml
Host species	Rabbit
Ig class	Immunogen-specific rabbit IgG
Purification	Antigen affinity purification

Target information

Symbol	SNRPA
Full name	small nuclear ribonucleoprotein polypeptide A

Synonyms U1A; Mud1; U1-A

Swissprot P09012

Target Background

The protein encoded by this gene associates with stem loop II of the U1 small nuclear ribonucleoprotein, which binds the 5' splice site of precursor mRNAs and is required for splicing. The encoded protein autoregulates itself by polyadenylation inhibition of its own pre-mRNA via dimerization and has been implicated in the coupling of splicing and polyadenylation.

Applications

Immunohistochemistry

Predicted cell location: Nucleus

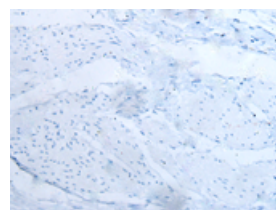
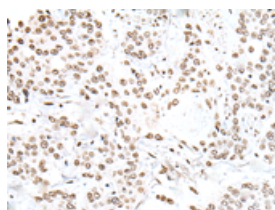
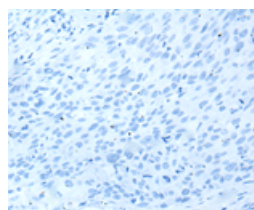
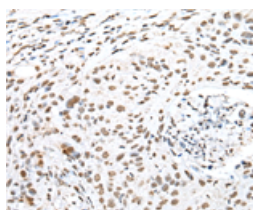
Predicted cell location: Nucleus

Positive control: Human lung cancer

Positive control: Human prostate cancer

Recommended dilution: 25-100

Recommended dilution: 25-100



The image on the left is immunohistochemistry of paraffin-embedded Human lung cancer tissue using ml224122(SNRPA Antibody) at dilution 1/30, on the right is treated with fusion protein. (Original magnification: ×200)

The image on the left is immunohistochemistry of paraffin-embedded Human prostate cancer tissue using ml224122(SNRPA Antibody) at dilution 1/30, on the right is treated with fusion protein. (Original magnification: ×200)

Western blotting

Predicted band size: 31 kDa

Positive control: Human fetal liver tissue, A431 cell, 293T cell, Hela cell, HEPG2 cell and A549 cell lysates

Recommended dilution: 500-2000

Gel: 8%SDS-PAGE

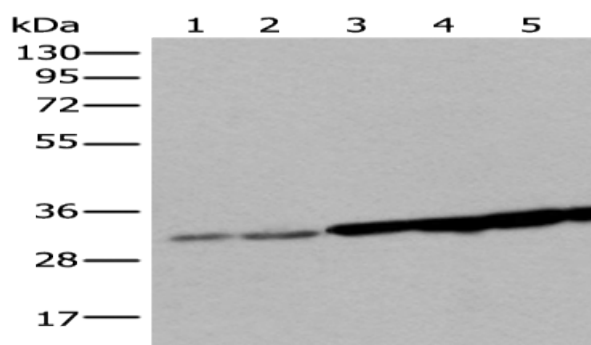
Lysate: 40 µg

Lane 1-6: Human fetal liver tissue, A431 cell, 293T cell, Hela cell,
HEPG2 cell and A549 cell lysates

Primary antibody: ml224122(SNRPA Antibody) at dilution 1/250

Secondary antibody: Goat anti rabbit IgG at 1/8000 dilution

Exposure time: 3 seconds



ELISA

Recommended dilution: 5000-10000

联系电话: 4008-898-798, 021-61725725

联系QQ: 2881505695, 2881505696

邮箱: mlbio_cn@yeah.net

网址: www.mlbio.cn