

Anti-APOM antibody

Cat. No.	ml221661
Package	25 µl/100 µl/200 µl
Storage	-20°C, pH7.4 PBS, 0.05% NaN ₃ , 40% Glycerol

Product overview

Description	Anti-APOM rabbit polyclonal antibody
Applications	ELISA, WB
Immunogen	Fusion protein of human APOM
Reactivity	Human, Mouse, Rat
Content	0.2 mg/ml
Host species	Rabbit
Ig class	Immunogen-specific rabbit IgG
Purification	Antigen affinity purification

Target information

Symbol	APOM
Full name	apolipoprotein M
Synonyms	G3a; NG20; apo-M; HSPC336
Swissprot	O95445

Target Background

The protein encoded by this gene is an apolipoprotein and member of the lipocalin protein family. It is found associated with high density lipoproteins and to a lesser extent with low density lipoproteins and triglyceride-rich lipoproteins. The encoded protein is secreted through the plasma membrane but remains membrane-bound, where it is involved in lipid transport. Alternate splicing results in both coding and non-coding variants of this gene.

订购热线: 4008-898-798

Applications

Western blotting

Predicted band size: 21 kDa

Positive control: Human fetal liver and liver cancer tissue, human placenta tissue

Recommended dilution: 200-1000

Gel: 12+15% SDS-PAGE

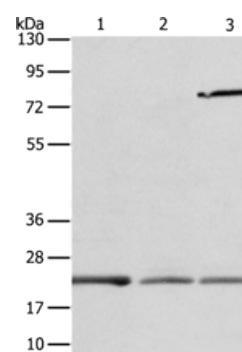
Lysate: 40 µg

Lane 1-3: Human fetal liver tissue, Human liver cancer tissue, human placenta tissue

Primary antibody: ml221661 (APOM Antibody) at dilution 1/300

Secondary antibody: Goat anti rabbit IgG at 1/8000 dilution

Exposure time: 1 minute



ELISA

Recommended dilution: 1000-2000

联系电话: 4008-898-798, 021-61725725

联系QQ: 2881505695, 2881505696

邮箱: mlbio_cn@yeah.net

网址: www.mlbio.cn