

Anti-GNA13 antibody

Cat. No.	ml220650
Package	25 µl/100 µl/200 µl
Storage	-20°C, pH7.4 PBS, 0.05% NaN ₃ , 40% Glycerol

Product overview

Description	Anti-GNA13 rabbit polyclonal antibody
Applications	ELISA, WB, IHC
Immunogen	Fusion protein of human GNA13
Reactivity	Human, Mouse, Rat
Content	0.5 mg/ml
Host species	Rabbit
Ig class	Immunogen-specific rabbit IgG
Purification	Antigen affinity purification

Target information

Symbol	GNA13
Full name	guanine nucleotide binding protein (G protein), alpha 13

Synonyms	G13
Swissprot	Q14344

Target Background

Guanine nucleotide-binding protein subunit alpha-13 is a protein that in humans is encoded by the GNA13 gene. Guanine nucleotide-binding proteins (G proteins) are involved as modulators or transducers in various transmembrane signaling systems. G proteins are composed of 3 units; alpha, beta and gamma. The alpha chain contains the guanine nucleotide binding site. Interacts with UBXD5. Interacts with HAX1. Interacts (when active) with PPP5C (via TPR repeats); activates PPP5C phosphatase activity and translocates PPP5C to the cell membrane.

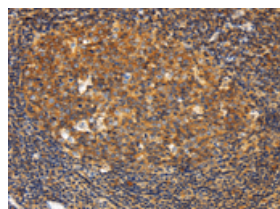
Applications

Immunohistochemistry

Predicted cell location: Cytoplasm

Positive control: Human tonsil

Recommended dilution: 25-100

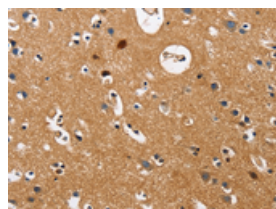


The image on the left is immunohistochemistry of paraffin-embedded Human tonsil tissue using ml220650(GNA13 Antibody) at dilution 1/20, on the right is treated with fusion protein. (Original magnification: $\times 200$)

Predicted cell location: Cytoplasm

Positive control: Human brain

Recommended dilution: 25-100



The image on the left is immunohistochemistry of paraffin-embedded Human brain tissue using ml220650(GNA13 Antibody) at dilution 1/20, on the right is treated with fusion protein. (Original magnification: $\times 200$)

Western blotting

Predicted band size: 44 kDa

Positive control: Mouse kidney tissue, human testis and brain malignant glioma tissue

Recommended dilution: 500-2000

Gel: 15%SDS-PAGE

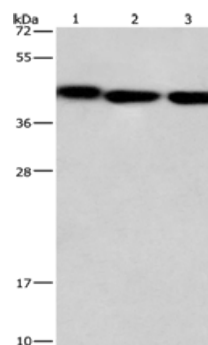
Lysate: 40 µg

Lane 1-3: Mouse kidney tissue, human testis tissue, Human brain malignant glioma tissue

Primary antibody: ml220650(GNA13 Antibody) at dilution 1/450

Secondary antibody: Goat anti rabbit IgG at 1/8000 dilution

Exposure time: 1 minute



ELISA

Recommended dilution: 2000-5000

联系电话: 4008-898-798, 021-61725725

联系QQ: 2881505695, 2881505696

邮箱: mlbio_cn@yeah.net

网址: www.mlbio.cn