

Anti-GDF9 antibody

Cat. No.	ml220689
Package	25 µl/100 µl/200 µl
Storage	-20°C, pH7.4 PBS, 0.05% NaN ₃ , 40% Glycerol

Product overview

Description	Anti-GDF9 rabbit polyclonal antibody
Applications	ELISA, WB, IHC
Immunogen	Fusion protein of human GDF9
Reactivity	Human, Mouse
Content	0.3 mg/ml
Host species	Rabbit
Ig class	Immunogen-specific rabbit IgG
Purification	Antigen affinity purification

Target information

Symbol	GDF9
Full name	Growth differentiation factor 9

Synonyms

Swissprot O60383

Target Background

Growth factors synthesized by ovarian somatic cells directly affect oocyte growth and function. Growth differentiation factor-9 (GDF9) is expressed in oocytes and is thought to be required for ovarian folliculogenesis. GDF9 is a member of the transforming growth factor-beta superfamily.

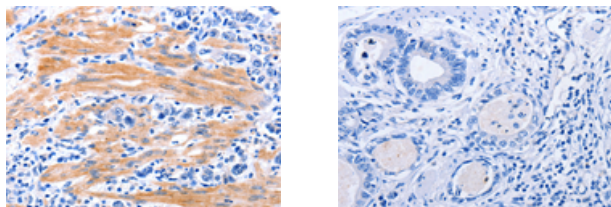
Applications

Immunohistochemistry

Predicted cell location: Cytoplasm

Positive control: Human stomach cancer

Recommended dilution: 10-50



The image on the left is immunohistochemistry of paraffin-embedded Human stomach cancer tissue using ml220689(GDF9 Antibody) at dilution 1/7, on the right is treated with fusion protein. (Original magnification: ×200)

Western blotting

Predicted band size: 51 kDa

Positive control: Human ovarian cancer tissue

Recommended dilution: 100-500

Gel: 12%SDS-PAGE

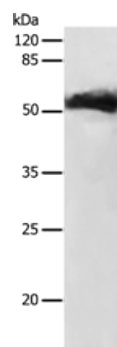
Lysate: 30 µg

Lane: Human ovarian cancer tissue

Primary antibody: ml220689(GDF9 Antibody) at dilution 1/150

Secondary antibody: Goat anti rabbit IgG at 1/8000 dilution

Exposure time: 5 minutes



ELISA

Recommended dilution: 500-2000

联系电话: 4008-898-798, 021-61725725

联系QQ: 2881505695, 2881505696

邮箱: mlbio_cn@yeah.net

网址: www.mlbio.cn