

Anti-UQCRQ antibody

Cat. No.	D224173
Package	25 µl/100 µl/200 µl
Storage	-20°C, pH7.4 PBS, 0.05% NaN ₃ , 40% Glycerol

Product overview

Description	Anti-UQCRQ rabbit polyclonal antibody
Applications	ELISA, WB, IHC
Immunogen	Full length fusion protein
Reactivity	Human, Rat
Content	0.5 mg/ml
Host species	Rabbit
Ig class	Immunogen-specific rabbit IgG
Purification	Antigen affinity purification

Target information

Symbol	UQCRQ
Full name	ubiquinol-cytochrome c reductase complex III subunit VII
Synonyms	QPC; QCR8; QP-C; UQCR7; MC3DN4
Swissprot	O14949

Target Background

This gene encodes a ubiquinone-binding protein of low molecular mass. This protein is a small core-associated protein and a subunit of ubiquinol-cytochrome c reductase complex III, which is part of the mitochondrial respiratory chain.

订购热线: 4008-898-798

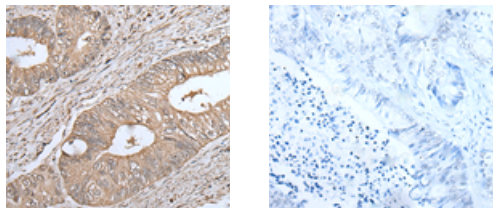
Applications

Immunohistochemistry

Predicted cell location: Cytoplasm

Positive control: Human colorectal cancer

Recommended dilution: 30-150



The image on the left is immunohistochemistry of paraffin-embedded Human colorectal cancer tissue using ml224173(UQCRQ Antibody) at dilution 1/45, on the right is treated with fusion protein. (Original magnification: $\times 200$)

Western blotting

Predicted band size: 10 kDa

Positive control: Human fetal liver tissue, HEPG2 cell, Human placenta tissue, 231, Hela, A549 and 293T cell lysates

Recommended dilution: 500-2000

Gel: 12% SDS-PAGE

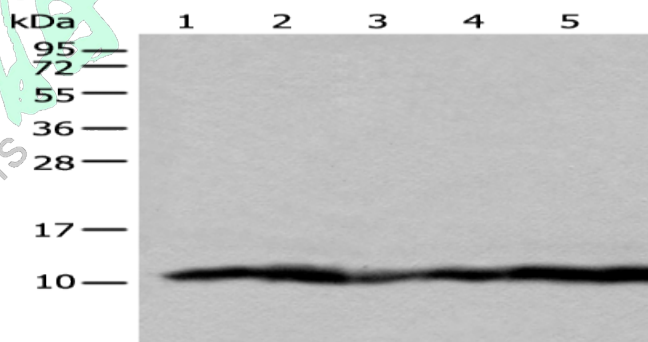
Lysate: 40 μ g

Lane 1-7: Human fetal liver tissue, HEPG2 cell, Human placenta tissue, 231, Hela, A549 and 293T cell lysates

Primary antibody: ml224173(UQCRQ Antibody) at dilution 1/450

Secondary antibody: Goat anti rabbit IgG at 1/8000 dilution

Exposure time: 1 second



ELISA

Recommended dilution: 5000-10000

联系电话: 4008-898-798, 021-61725725

联系QQ: 2881505695, 2881505696

邮箱: mlbio_cn@yeah.net

网址: www.mlbio.cn