

Anti-GREM1 antibody

Cat. No.	ml220721
Package	25 µl/100 µl/200 µl
Storage	-20°C, pH7.4 PBS, 0.05% NaN ₃ , 40% Glycerol

Product overview

Description	Anti-GREM1 rabbit polyclonal antibody
Applications	ELISA, WB
Immunogen	Fusion protein of human GREM1
Reactivity	Human, Mouse, Rat
Content	0.3 mg/ml
Host species	Rabbit
Ig class	Immunogen-specific rabbit IgG
Purification	Antigen affinity purification

Target information

Symbol	GREM1
Full name	gremlin 1, DAN family BMP antagonist
Synonyms	DRM; HMPS; MPSH; PIG2; CRAC1; CRCS4; DAND2; HMPS1; IHG-2; DUP15q; C15DUPq; GREMLIN; CKTSF1B1
Swissprot	O60565

Target Background

This gene encodes a member of the BMP (bone morphogenic protein) antagonist family. Like BMPs, BMP antagonists contain cystine knots and typically form homo- and heterodimers. The CAN (cerberus and dan) subfamily of BMP antagonists, to which this gene belongs, is characterized by a C-terminal cystine knot with an eight-membered ring. The antagonistic effect of the secreted glycosylated protein encoded by this gene is likely due to its direct binding to BMP proteins. As an antagonist of BMP, this gene may play a role in regulating organogenesis, body patterning, and tissue differentiation. In mouse, this protein has been shown to relay the sonic hedgehog (SHH) signal from the polarizing region to the apical ectodermal ridge during limb bud outgrowth. Alternatively spliced transcript variants encoding different isoforms have been found for this gene.

订购热线: 4008-898-798

Applications

Western blotting

Predicted band size: 21 kDa

Positive control: Mouse testis tissue

Recommended dilution: 500-2000

Gel: 12% SDS-PAGE

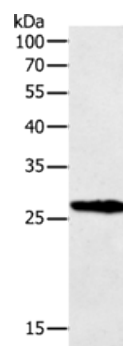
Lysate: 40 µg

Lane: Mouse testis tissue

Primary antibody: ml220721 (GREM1 Antibody) at dilution 1/700

Secondary antibody: Goat anti rabbit IgG at 1/8000 dilution

Exposure time: 10 seconds



ELISA

Recommended dilution: 2000-5000

联系电话: 4008-898-798, 021-61725725

联系QQ: 2881505695, 2881505696

邮箱: mlbio_cn@yeah.net

网址: www.mlbio.cn