

## Anti-CFHR1 antibody

<b>Cat. No.</b>	ml220737
<b>Package</b>	25 µl/100 µl/200 µl
<b>Storage</b>	-20°C, pH7.4 PBS, 0.05% NaN <sub>3</sub> , 40% Glycerol

### Product overview

<b>Description</b>	Anti-CFHR1 rabbit polyclonal antibody
<b>Applications</b>	ELISA, WB, IHC
<b>Immunogen</b>	Fusion protein of human CFHR1
<b>Reactivity</b>	Human
<b>Content</b>	0.2 mg/ml
<b>Host species</b>	Rabbit
<b>Ig class</b>	Immunogen-specific rabbit IgG
<b>Purification</b>	Antigen affinity purification

### Target information

<b>Symbol</b>	CFHR1
<b>Full name</b>	complement factor H-related 1

<b>Synonyms</b>	CFHL, FHR1, HFL1, HFL2, CFHL1, H36-1, H36-2, CFHL1P, CFHR1P
<b>Swissprot</b>	Q03591

#### Target Background

This gene encodes a secreted protein belonging to the complement factor H protein family. It binds to *Pseudomonas aeruginosa* elongation factor Tuf together with plasminogen, which is proteolytically activated. It is proposed that Tuf acts as a virulence factor by acquiring host proteins to the pathogen surface, controlling complement, and facilitating tissue invasion. Mutations in this gene are associated with an increased risk of atypical hemolytic-uremic syndrome.

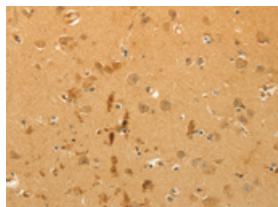
## Applications

### Immunohistochemistry

Predicted cell location: Cytoplasm

Positive control: Human brain

Recommended dilution: 50-200

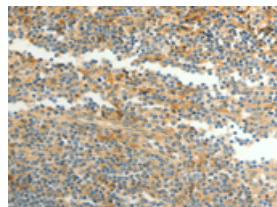


The image on the left is immunohistochemistry of paraffin-embedded Human brain tissue using ml220737(CFHR1 Antibody) at dilution 1/40, on the right is treated with fusion protein. (Original magnification:  $\times 200$ )

Predicted cell location: Cytoplasm

Positive control: Human tonsil

Recommended dilution: 50-200



The image on the left is immunohistochemistry of paraffin-embedded Human tonsil tissue using ml220737(CFHR1 Antibody) at dilution 1/40, on the right is treated with fusion protein. (Original magnification:  $\times 200$ )

### Western blotting

Predicted band size: 38 kDa

Positive control: Human liver cancer tissue

Recommended dilution: 500-2000

Gel: 10%SDS-PAGE

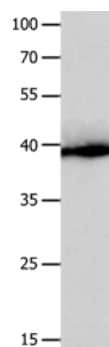
Lysate: 40  $\mu$ g

Lane: Human liver cancer tissue

Primary antibody: ml220737(CFHR1 Antibody) at dilution 1/300

Secondary antibody: Goat anti rabbit IgG at 1/8000 dilution

Exposure time: 30 seconds



#### ELISA

Recommended dilution: 2000-5000

联系电话: 4008-898-798, 021-61725725

联系QQ: 2881505695, 2881505696

邮箱: [mlbio\\_cn@yeah.net](mailto:mlbio_cn@yeah.net)

网址: [www.mlbio.cn](http://www.mlbio.cn)