

Anti-BCL6B antibody

Cat. No.	ml224241
Package	25 µl/100 µl/200 µl
Storage	-20°C, pH7.4 PBS, 0.05% NaN ₃ , 40% Glycerol

Product overview

Description	Anti-BCL6B rabbit polyclonal antibody
Applications	ELISA, WB, IHC
Immunogen	Fusion protein of human BCL6B
Reactivity	Human, Mouse
Content	0.3 mg/ml
Host species	Rabbit
Ig class	Immunogen-specific rabbit IgG
Purification	Antigen affinity purification

Target information

Symbol	BCL6B
Full name	B-cell CLL/lymphoma 6B

Synonyms BAZF; ZNF62; ZBTB28

Swissprot Q8N143

Target Background

Bcl-6, a transcriptional repressor, binds Stat recognition-like DNA elements and influences germinal center development and cell differentiation. Additionally, Bcl-6 negatively regulates NF κ B expression, thereby inhibiting NF κ B-mediated cellular functions. Bcl-6b (B-cell CLL/lymphoma 6, member B), also known as ZNF62, BAZF or ZBTB28, is a 480 amino acid nuclear protein that contains one BTB (POZ) domain and five C2H2-type zinc fingers. Expressed ubiquitously with highest expression in placenta and heart, Bcl-6b associates with Bcl-6 and functions as a sequence-specific transcriptional repressor that is thought to be necessary for early B-cell development. The gene encoding Bcl-6b maps to human chromosome 17, which comprises over 2.5% of the human genome and encodes over 1,200 genes.

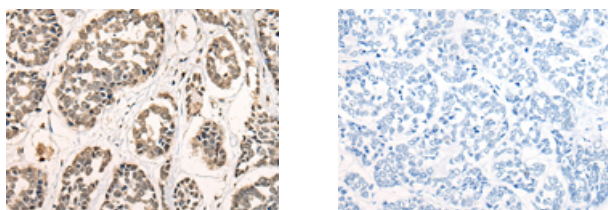
Applications

Immunohistochemistry

Predicted cell location: Nucleus

Positive control: Human esophagus cancer

Recommended dilution: 25-100



The image on the left is immunohistochemistry of paraffin-embedded Human esophagus cancer tissue using ml224241(BCL6B Antibody) at dilution 1/30, on the right is treated with fusion protein. (Original magnification: $\times 200$)

Western blotting

Predicted band size: 51 kDa

Positive control: A549 cell lysate

Recommended dilution: 200-1000

Gel: 8%SDS-PAGE

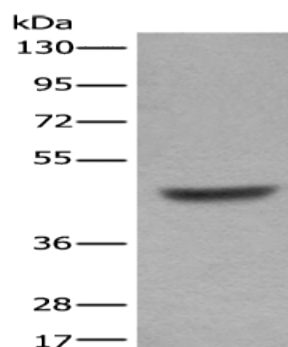
Lysate: 40 μ g

Lane: A549 cell lysate

Primary antibody: ml224241(BCL6B Antibody) at dilution 1/200

Secondary antibody: Goat anti rabbit IgG at 1/8000 dilution

Exposure time: 1 second



ELISA

Recommended dilution: 5000-10000

联系电话: 4008-898-798, 021-61725725

联系QQ: 2881505695, 2881505696

邮箱: mlbio_cn@yeah.net

网址: www.mlbio.cn