

Anti-HPSE antibody

| | |
|-----------------|---|
| Cat. No. | ml220758 |
| Package | 25 µl/100 µl/200 µl |
| Storage | -20°C, pH7.4 PBS, 0.05% NaN ₃ , 40% Glycerol |

Product overview

| | |
|---------------------|--------------------------------------|
| Description | Anti-HPSE rabbit polyclonal antibody |
| Applications | ELISA, WB |
| Immunogen | Fusion protein of human HPSE |
| Reactivity | Human |
| Content | 0.29 mg/ml |
| Host species | Rabbit |
| Ig class | Immunogen-specific rabbit IgG |
| Purification | Antigen affinity purification |

Target information

| | |
|------------------|------------------------------|
| Symbol | HPSE |
| Full name | heparanase |
| Synonyms | HPA, HPA1, HPR1, HSE1, HPSE1 |
| Swissprot | Q9Y251 |

Target Background

Heparan sulfate proteoglycans are major components of the basement membrane and extracellular matrix. The protein encoded by this gene is an enzyme that cleaves heparan sulfate proteoglycans to permit cell movement through remodeling of the extracellular matrix. In addition, this cleavage can release bioactive molecules from the extracellular matrix. Several transcript variants encoding different isoforms have been found for this gene.

订购热线: 4008-898-798

Applications

Western blotting

Predicted band size: 61 kDa

Positive control: Human transitional cells carcinoma tissue

Recommended dilution: 500-2000

Gel: 10% SDS-PAGE

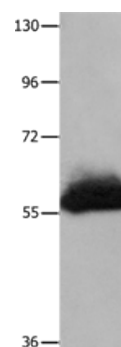
Lysate: 60 µg

Lane: Human transitional cell carcinoma tissue

Primary antibody: ml220758(HPSE Antibody) at dilution 1/100

Secondary antibody: Goat anti rabbit IgG at 1/8000 dilution

Exposure time: 5 minutes



ELISA

Recommended dilution: 2000-5000

联系电话: 4008-898-798, 021-61725725

联系QQ: 2881505695, 2881505696

邮箱: mlbio_cn@yeah.net

网址: www.mlbio.cn