

Anti-IFNG antibody

Cat. No.	ml220806
Package	25 µl/100 µl/200 µl
Storage	-20°C, pH7.4 PBS, 0.05% NaN ₃ , 40% Glycerol

Product overview

Description	Anti-IFNG rabbit polyclonal antibody
Applications	ELISA, WB, IHC
Immunogen	Fusion protein of human IFNG
Reactivity	Human
Content	0.2 mg/ml
Host species	Rabbit
Ig class	Immunogen-specific rabbit IgG
Purification	Antigen affinity purification

Target information

Symbol	IFNG
Full name	interferon, gamma

Synonyms IFG; IFI

Swissprot P01579

Target Background

This gene encodes a member of the type II interferon family. The protein encoded is a soluble cytokine with antiviral, immunoregulatory and anti-tumor properties and is a potent activator of macrophages. Mutations in this gene are associated with aplastic anemia.

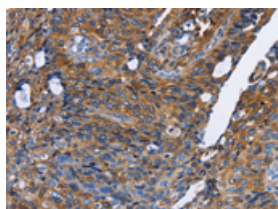
Applications

Immunohistochemistry

Predicted cell location: Cytoplasm

Positive control: Human cervical cancer

Recommended dilution: 25-100

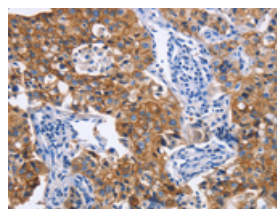


The image on the left is immunohistochemistry of paraffin-embedded Human cervical cancer tissue using ml220806(IFNG Antibody) at dilution 1/30, on the right is treated with fusion protein. (Original magnification: $\times 200$)

Predicted cell location: Cytoplasm

Positive control: Human lung cancer

Recommended dilution: 25-100



The image on the left is immunohistochemistry of paraffin-embedded Human lung cancer tissue using ml220806(IFNG Antibody) at dilution 1/30, on the right is treated with fusion protein. (Original magnification: $\times 200$)

Western blotting

Predicted band size: 19 kDa

Positive control: Human fetal liver tissue

Recommended dilution: 200-1000

Gel: 12%SDS-PAGE

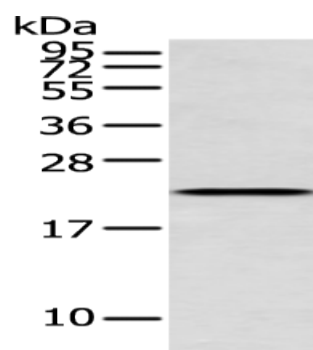
Lysate: 40 µg

Lane: Human fetal liver tissue

Primary antibody: ml220806(IFNG Antibody) at dilution 1/250

Secondary antibody: Goat anti rabbit IgG at 1/8000 dilution

Exposure time: 1 minute



ELISA

Recommended dilution: 1000-2000

联系电话: 4008-898-798, 021-61725725

联系QQ: 2881505695, 2881505696

邮箱: mlbio_cn@yeah.net

网址: www.mlbio.cn