

Anti-IGF2BP2 antibody

Cat. No.	ml220813
Package	25 µl/100 µl/200 µl
Storage	-20°C, pH7.4 PBS, 0.05% NaN ₃ , 40% Glycerol

Product overview

Description	Anti-IGF2BP2 rabbit polyclonal antibody
Applications	ELISA, WB
Immunogen	Fusion protein of human IGF2BP2
Reactivity	Human, Mouse
Content	0.5 mg/ml
Host species	Rabbit
Ig class	Immunogen-specific rabbit IgG
Purification	Antigen affinity purification

Target information

Symbol	IGF2BP2
Full name	insulin-like growth factor 2 mRNA binding protein 2
Synonyms	p62, IMP2, IMP-2, VICKZ2
Swissprot	Q9Y6M1

Target Background

This gene encodes a member of the IGF-II mRNA-binding protein (IMP) family. The protein encoded by this gene contains several four KH domains and two RRM domains. It functions by binding to the 5' UTR of the insulin-like growth factor 2 (IGF2) mRNA and regulating IGF2 translation. Alternate transcriptional splice variants, encoding different isoforms, have been characterized. May regulate translation of target mRNAs.

订购热线: 4008-898-798

Applications

Western blotting

Predicted band size: 66 kDa

Positive control: Human liver and ovarian cancer tissue

Recommended dilution: 200-1000

Gel: 8%SDS-PAGE

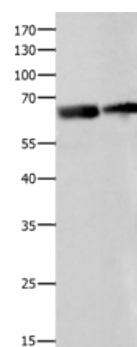
Lysate: 40 µg

Lane 1-2: Human liver tissue, Human ovarian cancer tissue

Primary antibody: ml220813(IGF2BP2 Antibody) at dilution 1/300

Secondary antibody: Goat anti rabbit IgG at 1/8000 dilution

Exposure time: 2 minutes



ELISA

Recommended dilution: 1000-5000

联系电话: 4008-898-798, 021-61725725

联系QQ: 2881505695, 2881505696

邮箱: mlbio_cn@yeah.net

网址: www.mlbio.cn