

Anti-IGF2BP3 antibody

Cat. No.	ml220815
Package	25 µl/100 µl/200 µl
Storage	-20°C, pH7.4 PBS, 0.05% NaN ₃ , 40% Glycerol

Product overview

Description	Anti-IGF2BP3 rabbit polyclonal antibody
Applications	ELISA, WB
Immunogen	Fusion protein of human IGF2BP3
Reactivity	Human, Mouse
Content	0.1 mg/ml
Host species	Rabbit
Ig class	Immunogen-specific rabbit IgG
Purification	Antigen affinity purification

Target information

Symbol	IGF2BP3
Full name	insulin-like growth factor 2 mRNA binding protein 3
Synonyms	KOC; CT98; IMP3; KOC1; IMP-3; VICKZ3
Swissprot	O00425

Target Background

The protein encoded by this gene is primarily found in the nucleolus, where it can bind to the 5' UTR of the insulin-like growth factor II leader 3 mRNA and may repress translation of insulin-like growth factor II during late development. The encoded protein contains several KH domains, which are important in RNA binding and are known to be involved in RNA synthesis and metabolism. A pseudogene exists on chromosome 7, and there are putative pseudogenes on other chromosomes.

订购热线: 4008-898-798

Applications

Western blotting

Predicted band size: 64 kDa

Positive control: A172, hela and hepg2 cells

Recommended dilution: 500-2000

Gel: 6%SDS-PAGE

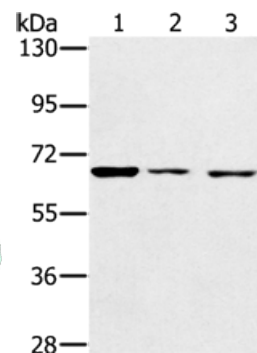
Lysate: 40 µg

Lane 1-3: A172 cells, hela cells, hepg2 cells

Primary antibody: ml220815(IGF2BP3 Antibody) at dilution 1/200

Secondary antibody: Goat anti rabbit IgG at 1/8000 dilution

Exposure time: 20 seconds



ELISA

Recommended dilution: 2000-5000

联系电话: 4008-898-798, 021-61725725

联系QQ: 2881505695, 2881505696

邮箱: mlbio_cn@yeah.net

网址: www.mlbio.cn