

Anti-CATSPER3 antibody

Cat. No.	ml222040
Package	25 µl/100 µl/200 µl
Storage	-20°C, pH7.4 PBS, 0.05% NaN ₃ , 40% Glycerol

Product overview

Description	Anti-CATSPER3 rabbit polyclonal antibody
Applications	ELISA, WB
Immunogen	Fusion protein of human CATSPER3
Reactivity	Human, Mouse
Content	0.4 mg/ml
Host species	Rabbit
Ig class	Immunogen-specific rabbit IgG
Purification	Antigen affinity purification

Target information

Symbol	CATSPER3
Full name	cation channel, sperm associated 3
Synonyms	CACRC
Swissprot	Q86XQ3

Target Background

CatSper (cation channel, sperm associated proteins) are ion transport proteins located on the surface of sperm cells in the principal piece of the sperm tail. CatSper is vital to sperm motility, fertilization and cAMP-mediated calcium influx in sperm. There are four CatSper proteins in mammalian sperm, namely CatSper (or CatSper1), CatSper2, CatSper3 and CatSper4. CatSper proteins contain a single, six-transmembrane-spanning segment and exhibit the voltage-dependent Ca²⁺ channel four-repeat structure. CatSper proteins are believed to assemble into a heterotetrameric complex, forming an alkalization-activated Ca²⁺-selective channel. Mutations in any of the genes encoding CatSper family proteins can result in male infertility. CatSper3 plays an important role in the hyperactivated motility of sperm cells, a process that is required in the preparation of sperm for fertilization.

订购热线: 4008-898-798

Applications

Western blotting

Predicted band size: 46 kDa

Positive control: Mouse testis tissue

Recommended dilution: 500-2000

Gel: 8%SDS-PAGE

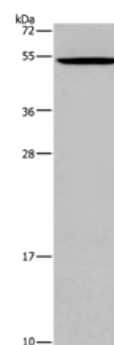
Lysate: 40 µg

Lane: Mouse testis tissue

Primary antibody: ml222040(CATSPER3 Antibody) at
dilution 1/350

Secondary antibody: Goat anti rabbit IgG at 1/8000 dilution

Exposure time: 2 minutes



ELISA

Recommended dilution: 2000-5000

联系电话: 4008-898-798, 021-61725725

联系QQ: 2881505695, 2881505696

邮箱: mlbio_cn@yeah.net

网址: www.mlbio.cn