

## Anti-BUD31 antibody

<b>Cat. No.</b>	ml224293
<b>Package</b>	25 µl/100 µl/200 µl
<b>Storage</b>	-20°C, pH7.4 PBS, 0.05% NaN <sub>3</sub> , 40% Glycerol

### Product overview

<b>Description</b>	Anti-BUD31 rabbit polyclonal antibody
<b>Applications</b>	ELISA, WB, IHC
<b>Immunogen</b>	Full length fusion protein
<b>Reactivity</b>	Human, Mouse, Rat
<b>Content</b>	1.5 mg/ml
<b>Host species</b>	Rabbit
<b>Ig class</b>	Immunogen-specific rabbit IgG
<b>Purification</b>	Antigen affinity purification

### Target information

<b>Symbol</b>	BUD31
<b>Full name</b>	BUD31 homolog

**Synonyms** G10; EDG2; Cwc14; EDG-2; fSAP17; YCR063W

**Swissprot** P41223

### Target Background

BUD31 (Protein G10 homolog, EDG-2) is a 144 amino acid protein encoded by the human gene BUD31. BUD31 is a nuclear protein that belongs to the BUD31 (G10) family. BUD31 is found on chromosome 7 which is about 158 million bases long, encodes over 1,000 genes and makes up about 5% of the human genome. Chromosome 7 has been linked to osteogenesis imperfecta, Pendred syndrome, lissencephaly, citrullinemia and Shwachman-Diamond syndrome. The deletion of a portion of the long (q) arm of human chromosome 7 is associated with Williams-Beuren syndrome, a condition characterized by mild mental retardation, an unusual comfort and friendliness with strangers and an elfin appearance. Deletions of portions of the q arm of chromosome 7 are also seen in a number of myeloid disorders including cases of acute myelogenous leukemia and myelodysplasia.

## Applications

### Immunohistochemistry

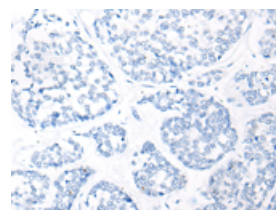
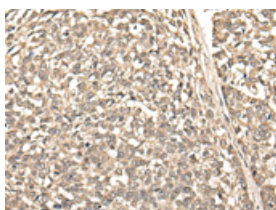
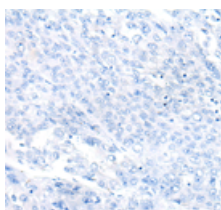
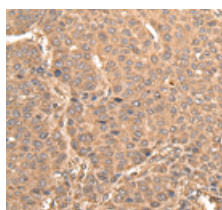
Predicted cell location: Cytoplasm or Nucleus      Predicted cell location: Cytoplasm or Nucleus

Positive control: Human liver cancer

Positive control: Human esophagus cancer

Recommended dilution: 50-300

Recommended dilution: 50-300



The image on the left is immunohistochemistry of paraffin-embedded Human liver cancer tissue using ml224293(BUD31 Antibody) at dilution 1/75, on the right is treated with fusion protein. (Original magnification: ×200)

The image on the left is immunohistochemistry of paraffin-embedded Human esophagus cancer tissue using ml224293(BUD31 Antibody) at dilution 1/75, on the right is treated with fusion protein. (Original magnification: ×200)

### Western blotting

Predicted band size: 17 kDa

Positive control: Human testis tissue, Mouse brain tissue, Mouse heart tissue, PC-3 cell, 231 cell, Raji and Jurkat cell lysates

Recommended dilution: 1000-5000

Gel: 12%SDS-PAGE

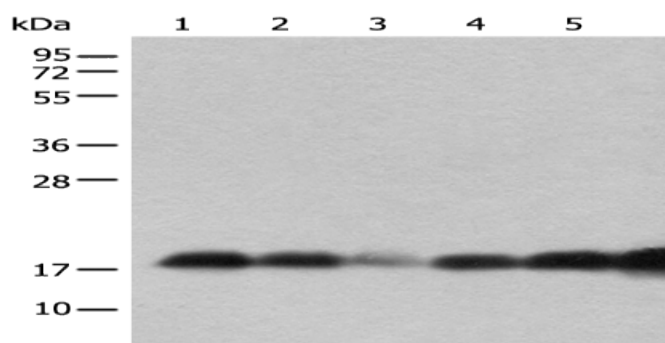
Lysate: 40 µg

Lane 1-7: Human testis tissue, Mouse brain tissue, Mouse heart tissue, PC-3 cell, 231 cell, Raji and Jurkat cell lysates

Primary antibody: ml224293(BUD31 Antibody) at dilution 1/800

Secondary antibody: Goat anti rabbit IgG at 1/8000 dilution

Exposure time: 10 seconds



## ELISA

Recommended dilution: 5000-10000

联系电话: 4008-898-798, 021-61725725

联系QQ: 2881505695, 2881505696

邮箱: [mlbio\\_cn@yeah.net](mailto:mlbio_cn@yeah.net)

网址: [www.mlbio.cn](http://www.mlbio.cn)