

Anti-CEP55 antibody

Cat. No.	ml222101
Package	25 µl/100 µl/200 µl
Storage	-20°C, pH7.4 PBS, 0.05% NaN ₃ , 40% Glycerol

Product overview

Description	Anti-CEP55 rabbit polyclonal antibody
Applications	ELISA, WB
Immunogen	Fusion protein of human CEP55
Reactivity	Human, Mouse, Rat
Content	0.7 mg/ml
Host species	Rabbit
Ig class	Immunogen-specific rabbit IgG
Purification	Antigen affinity purification

Target information

Symbol	CEP55
Full name	centrosomal protein 55kDa
Synonyms	CT111; URCC6; C10orf3
Swissprot	Q53EZ4

Target Background

Centrosomal protein of 55 kDa is a protein that in humans is encoded by the CEP55 gene. CEP55 is a mitotic phosphoprotein that plays a key role in cytokinesis, the final stage of cell division. Interacts (phosphorylated on Ser-425 and Ser-428) with PLK1. Interacts with AKAP9; the interaction occurs in interphase and is lost upon mitotic entry. Interacts with PCNT; the interaction occurs in interphase and is lost upon mitotic entry. Interacts with PDCCD6IP; the interaction is direct; CEP55 binds PDCCD6IP in a 2:1 stoichiometry; PDCCD6IP competes with TSG101 for the same binding site.

订购热线: 4008-898-798

Applications

Western blotting

Predicted band size: 54 kDa

Positive control: Mouse intestine tissue, human colon cancer and testis tissue

Recommended dilution: 200-1000

Gel: 10% SDS-PAGE

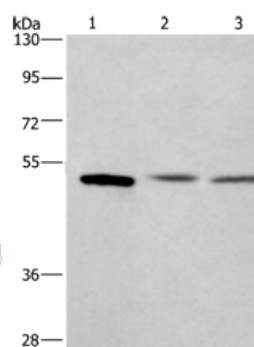
Lysate: 40 µg

Lane 1-3: Mouse intestine tissue, human colon cancer tissue, Human testis tissue

Primary antibody: ml222101 (CEP55 Antibody) at dilution 1/350

Secondary antibody: Goat anti rabbit IgG at 1/8000 dilution

Exposure time: 1 minute



ELISA

Recommended dilution: 1000-2000

联系电话: 4008-898-798, 021-61725725

联系QQ: 2881505695, 2881505696

邮箱: mlbio_cn@yeah.net

网址: www.mlbio.cn